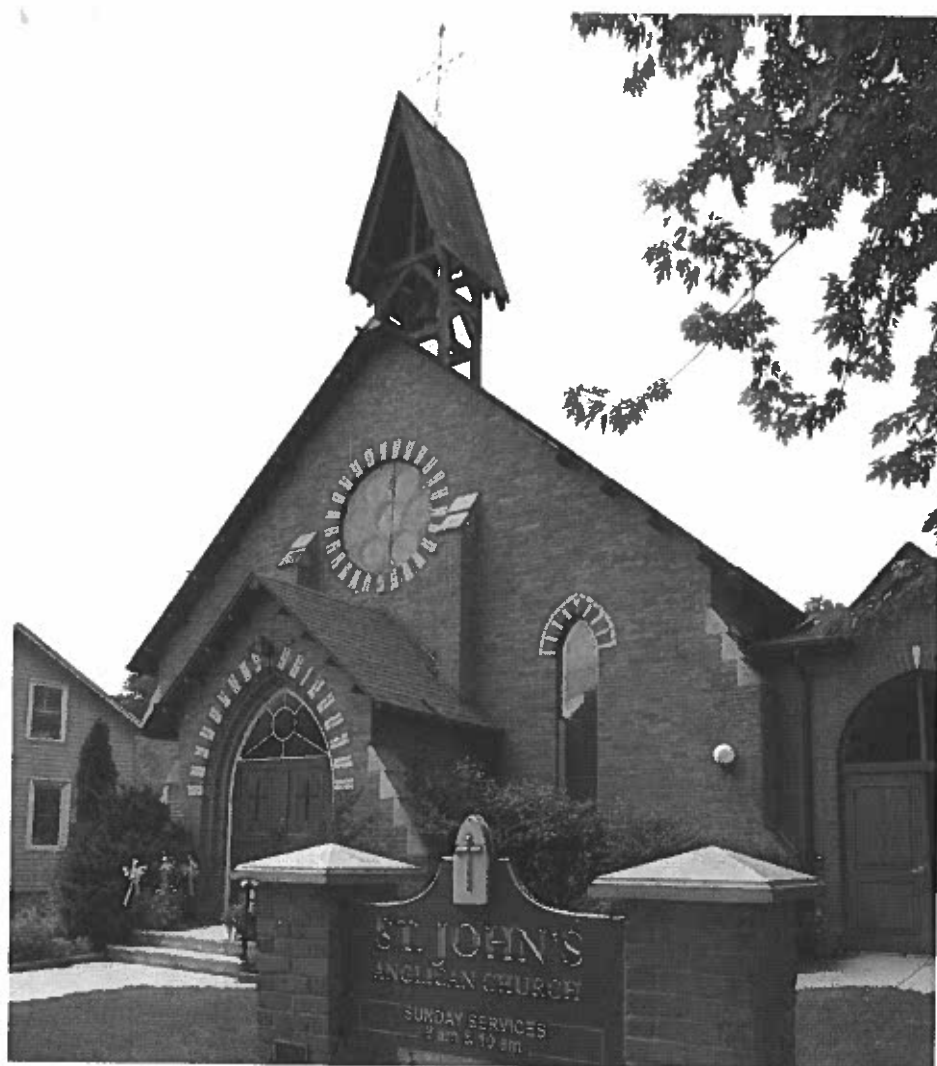


# ST. JOHN'S CHURCH PORT DALHOUSIE

ST. CATHARINES ONTARIO

*PARISH PROFILE*

---



## TABLE OF CONTENTS

---

<b>WELCOME TO ST. JOHN'S CHURCH PORT DALHOUSIE ST. CATHARINES ONTARIO PARISH PROFILE</b>	<b>1</b>
<b>OUR TRANSITION PRAYER</b>	<b>3</b>
<b>LOCATION</b>	<b>4</b>
<b>DEMOGRAPHICS</b>	<b>5</b>
<b>DEMOGRAPHICS</b>	<b>6</b>
<b>HISTORY</b>	<b>7</b>
<b>MEMBERSHIP and ATTENDANCE</b>	<b>8</b>
<b>WORSHIP</b>	<b>10</b>
<b>ST. JOHN'S ORGANIZATIONAL STRUCTURE</b>	<b>11</b>
<b>PROGRAMS AND ORGANIZATIONS</b>	<b>12</b>
<b>STEWARDSHIP</b>	<b>18</b>
<b>FLOOR PLANS AND ELEVATION DRAWING</b>	<b>33</b>
<b>LICENSING OF SPACE</b>	<b>35</b>
<b>WIDER CHURCH</b>	<b>36</b>
<b>SITUATION ANALYSIS</b>	<b>37</b>
<b>DESIRABLE CHARACTERISTICS OF OUR NEW RECTOR</b>	<b>42</b>
<b>FINANCES</b>	<b>43</b>

### APPENDIX

## WELCOME TO ST. JOHN'S PORT DALHOUSIE

---



The parish of St. John's Port Dalhousie is pleased to provide this profile of our beloved church and congregation. We hope that the following entries and photos will provide an accurate, extensive picture of who we are and portray our prayers and goals for the future as we live the gospel in our community.

---

## OUR TRANSITION PRAYER

---

*Lord Christ,  
Your continued presence encourages us with hope and optimism.  
During this period of discernment, we offer to you our prayers.  
On behalf of our parish family, we ask that you increase our capacity for patience and learning that we might comprehend your greater will.  
We seek the guidance of your Holy Spirit to strengthen our sense of vision to be able see the path before us ever more clearly.  
May we actively listen to you and to one another in order to make our decisions. We ask*

Written by the Venerable Bruce McPetrie for use during this transition period as we worked toward the creation of this Church Profile and the identification of our evolving mission and goals as we prepare for our future.

## LOCATION

St. John's Anglican Church is located in the heart of the former village of Port Dalhousie in the city of St. Catharines (population 135 000). This quaint sea-side community on the shores of Lake Ontario has a history dating back to the mid-1800's when it grew from the need for ship-building and transporting goods down the "new" Welland Canal. Many homes and businesses date to these early days. People still enjoy walking through the lovely tree-lined streets, visiting the marinas, picnicking or sunning on the beaches of Lakeside Park or going for a ride on the hundred year old carousel that is still just a nickel a ride. Stores, restaurants and pubs are down the block and the historic grandstand that hosts the Royal Canadian Henley Rowing Regatta and many other local and international regattas is just a stone's throw away. Our new regional hospital is also just minutes away. St Catharines boasts a vibrant Performing Arts Centre and active sports scene including amazing cycling routes and the Meridian Centre, the thriving new downtown sports venue. The Niagara Region offers affordable housing, a moderate climate, thriving agricultural and wine industries, proximity to Toronto (90 minutes), the U.S. Border (30 minutes), and Niagara Falls (20 minutes) and a growing, improving public regional transit system including Go Transit by 2023. The church has easy access to the Queen Elizabeth Highway and HWY 406.

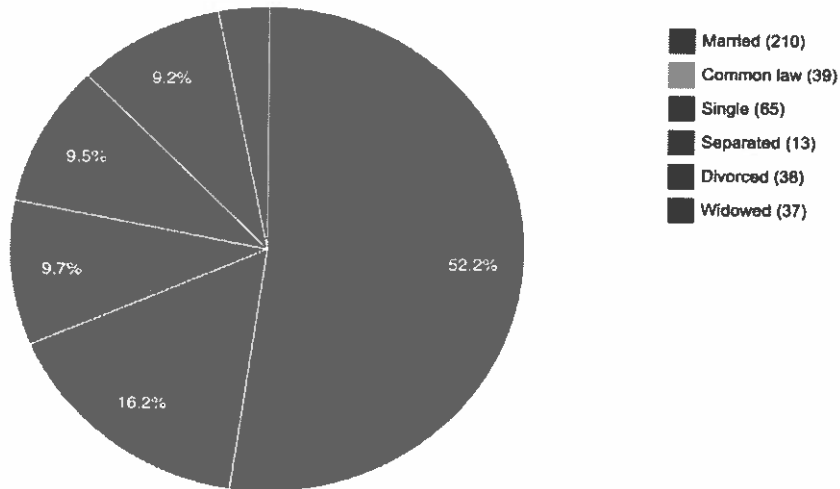
**MAP - Google maps 2019 showing church location in Port Dalhousie, St Catharines, Niagara Falls, edges of Lakes Ontario and Erie, QEW and HWY 406.**



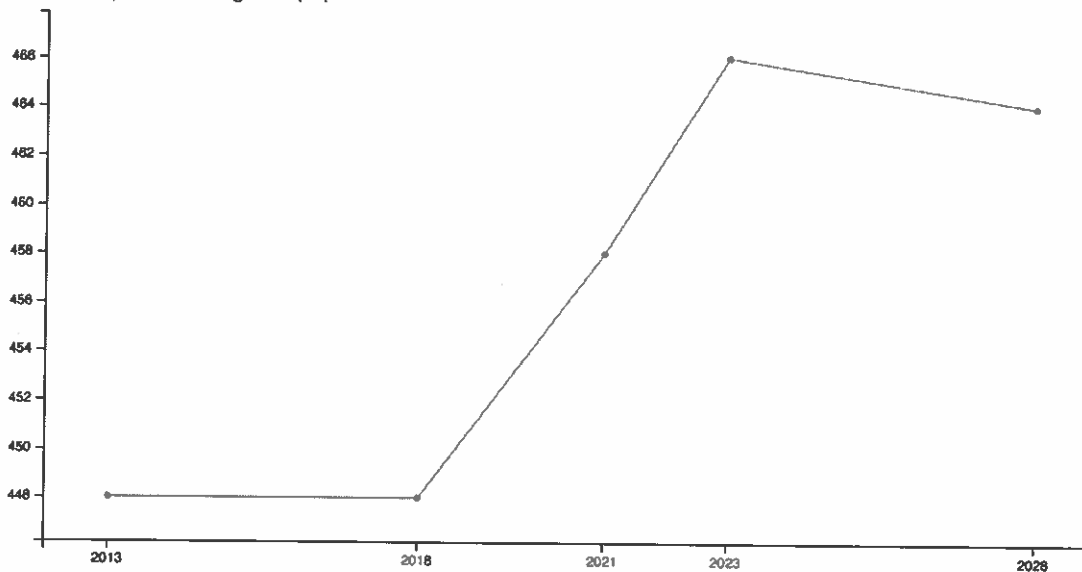
## DEMOGRAPHICS

The Port Dalhousie Historic district will see the addition of 300 new condominium units on Lakeport Road and Canal Street. Construction is underway on one building and the second building has all the planning approvals in place. More condominiums are slated to be built in Port Dalhousie.

Marital or formal relationship statuses.



Past and expected changes in population.



## DEMOGRAPHICS OF PORT DALHOUSIE

---

### ***Population by Age:***

6%	less than 10yr
5%	10-4yr
6%	15-19yr
13%	20-29yr
29%	30-54yr
20%	55-64yr
21%	65+

***Average Income:***                      **\$132 584**

18%	\$50K
54%	\$50K-\$150K
28%	\$150+

### ***Average Education:***

32%	University
29%	College
39%	High School

### ***Households:***

39%	Couples
36%	Families
25%	Singles
50%	Kids
50%	No kids
49%	Male
51%	Female
84%	Own
16%	Rent

## HISTORY

2020 marks the 186<sup>th</sup> anniversary of St. John's. The oldest parish in town, our history dates back nearly two hundred years with the first recorded Anglican services in 1834. The original wooden church structure built in 1841 was replaced by our current brick and stone building in 1868. Since then St. John's has welcomed everyone with its beautiful stained glass windows, dark stained pews, and traditional architecture as a place to worship and grow in their relationship with God and their neighbours. As the village of Port Dalhousie has changed with time, so has the church evolved by adding many improvements in the early 2000's to make it accessible, comfortable and useful for the community.

*See the Appendix for a recent article in our local quarterly, The Port Reporter, highlighting many aspects of our history.*



*Photo from the St. Catharines Standard recognizing the 175<sup>th</sup> Anniversary of the Parish with the Mayor, Bishop, and great, great, great granddaughter of the first priest leading the procession in a horse drawn carriage. June 2009*

## MEMBERSHIP

---

St. John's by the Numbers-	2018	2019
No. of members	111	108
No. of identifiable givers	112	87
No. of children baptized	3	0
No. of marriages	1	0
No. of funerals	14	9
 Average Sunday attendance	 75	 65
8:00a.m.	11	11
10:00a.m.	64	54 * see notes
 No. of children 5-11	 4	 2
No. of students	5	6
No. of nursery children	1	0
 Sunday Services	 2	 2
Clergy	1	1
Honorary Priests	0	0
Licensed Lay Readers	0	0
Vocational Deacons	0	0



### Total Average Sunday Attendance

Average Attendance	2017	2018	2019
8:00 am	10	11	11
10:00 am	65	64	54*

\*Addressed in Worship page 10

### High Feast Services Attendance

Feast Days	2017	2018	2019
Easter	111	115	102
Pentecost	61	76	79
Christmas Eve	122	95	112

**Number of Communion Services:** 107 117

### Special Services

Special Services	2017	2018	2019
Morning Prayer		1	1
Baptisms	0	3	0
Marriages	1	1	0
Funerals	5	14	9
Confirmations	0	0	0

## WORSHIP

---

St. John's has two Sunday morning services at 8:00 am and 10:00 am, with a combined average attendance of 65. Worship services continue at the same times during the summer months. Average attendance at the 10 a.m. service has possibly dropped due to two ice storms in winter of 2019, having an interim part-time priest versus a full-time permanent incumbent, no baptisms with their usual high number of family members attending, and the departure of several households when our former rector left. However, there is a sense of renewal and slowly new faces are joining us for worship.

The 8:00 am service is a said Eucharist using the Book of Common Prayer. This service is smaller, usually with 10 or 11 people in attendance, but they are very faithful and involved in parish life.

The 10:00 am service is a sung Eucharist, using the Book of Alternative Services and the Common Praise Hymnal. Musical accompaniment is provided on our beautiful pipe organ. The choir (about 12 members) lead the singing and often present anthems. The congregation is enthusiastic in their singing, and involved in many aspects of worship – by reading the lessons, leading the prayers of the people, acting as chalice bearers, etc. The children of the Sunday School when present gather in church before the service – and following a 'Children's Focus' time with the rector they go to their classes. The children return to receive communion or a blessing.

We are open and interested in exploring new forms of worship. The following special services have been held:

- Healing Service with anointing (first Sunday after 10:00 am worship)
- Ash Wednesday (evening or morning service with the Imposition of Ashes)
- Holy Week – one service each evening:
  - Evening Prayer
  - Even Song
  - Tenebrae
- Seder Dinner followed by Maundy Thursday Service with washing of feet
- Good Friday - Stations of the Cross followed by walk for PWRDF
- Easter Vigil
- Ascension – Morning Prayer Service
- Usually one sung Even Song in the fall (often close to All Saints Day)
- Christmas Eve – often two services, but in the last two years just one in the interim
- Blessing of the Animals

A weekly bulletin is prepared by the parish office administrator including the order of service, page references, prayer requests in our cycle of prayer for the international community, our diocese, and our own parish family. Announcements of special and up-coming events are also included.

## ST. JOHN'S ORGANIZATIONAL STRUCTURE

---

### ELECTED AND VOLUNTEER OFFICERS AND APPOINTED POSITIONS:

---

St. John's has two WARDENS. These persons, together with the incumbent, constitute the Corporation. Wardens have traditionally been appointed or elected for two year terms with no formal succession plan in place for these positions. Traditionally the wardens and incumbent have signing authority for bank/financial matters. Presently our priest-in-charge has chosen not to have signing authority. Diocesan job descriptions are adhered to and are in the office to review.

PARISH COUNCIL meets on the third Monday of each month with the exception of the two summer months. Minutes are taken of the parish council meetings and are circulated to all parish council members and available to any parishioner. All groups report to parish council and actively participate. Parish council is open to all parishioners.

There are currently two LAY DELEGATES and one ALTERNATE DELEGATE to Synod. Currently there are no YOUTH DELGATES.

We have an appointed TREASURER who assists the Corporation in fulfilling its financial obligations.

The PARISH OFFICE ADMINSTRATOR is a part-time (8 hrs/week) position. We hired a wonderful Office Administrator in March 2019. Following the retirement of our Envelope Secretary on December 31, 2019 after 22 years of faithful service, we have adopted a Richmond Software program to track envelope offerings for which our Office Administrator has assumed the responsibilities.

The OFFICE is open two half days per week. Recently we have re-configured our administrative spaces to provide an office with more privacy and personal storage for the Rector, a more efficient and larger work space for the Office Administrator, and a dedicated work space for the Cemetery Board, Wardens, and other volunteers.

The experienced ORGANIST/MUSIC DIRECTOR leads a 12 member choir. They sing at our 10 a.m. choral Eucharist service and all special services and hold weekly practices apart from the two summer months.

St. John's is blessed with a dedicated, reliable SEXTON who has served us faithfully for years.

Until his passing, the people of St. John's enjoyed the ministry of an Honorary Priest.

Our Corporation continues to develop an updated list of job descriptions for paid and volunteer positions. During this interim we are implementing the diocese's risk assessment review as part of our screening process.

## PROGRAMS AND ORGANIZATIONS

---

### MINISTRIES

#### Faith Formation

Prior to transition, regular weekly sessions of **Anglican 101** and **Bible Study** led by the Rector were well attended. A recent survey indicates continued interest among several parishioners for renewed programming for Christian Education. Our Priest-in-Charge over the months has presented several series of Faith Formation topics during Sunday services including: the parts of the Church Interior, the Liturgical Seasons of the Year, the Sacraments, the Bible, and the structures of the Anglican Church. These have been very well received and the congregation looks forward to this Christian education!

#### Sunday School

Until late last year, our Sunday School met during the 10 a.m. service led by a director of program and two other volunteer teachers. Children enjoyed talks with the Rector at the beginning of the service before heading to class. Our Sunday School serves about 6 youth who are predominantly adolescents occasionally joined by a couple of primary aged children. Presently programming varies according to the demographic of the youth attending on a particular Sunday. As a recent development, when the younger ones are not present, a youth group is evolving from our Sunday School core who enjoy a self-guided hour of religious discussion generated by one of the youth and supported by our adult teachers. Our Youth have indicated an interest in assuming roles more regularly during worship by volunteering as sides people and readers. Our goal this year is to expand their inclusion in worship services. We have an experienced volunteer in place who is willing to train youth as servers or chalice bearers.



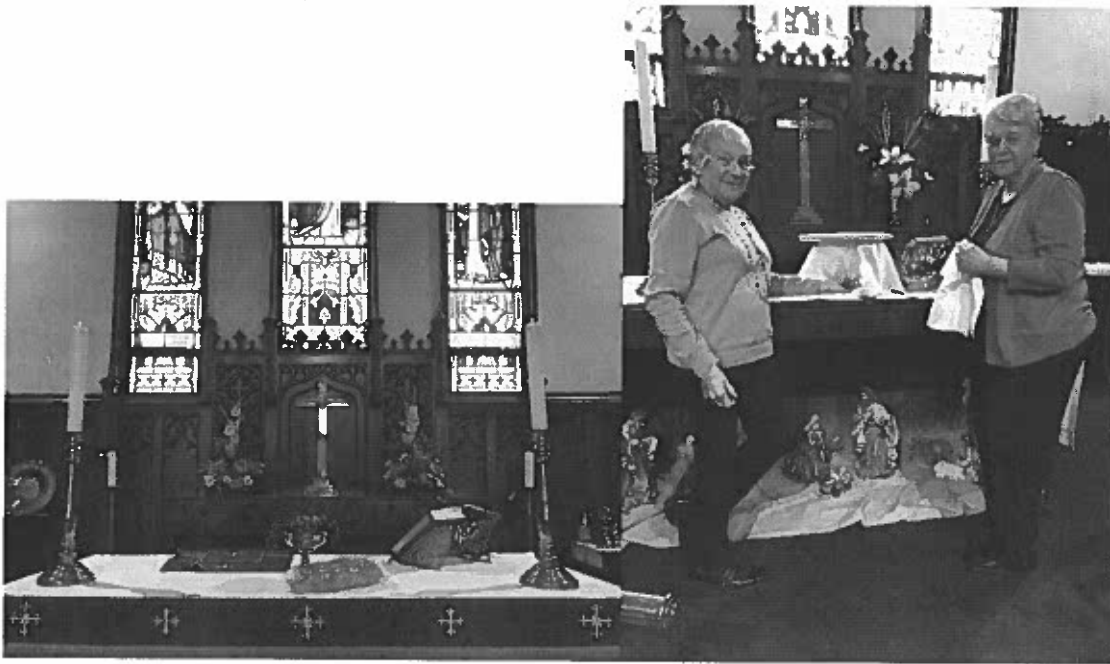
## LAY MINISTRIES:

---

### ALTAR GUILD

---

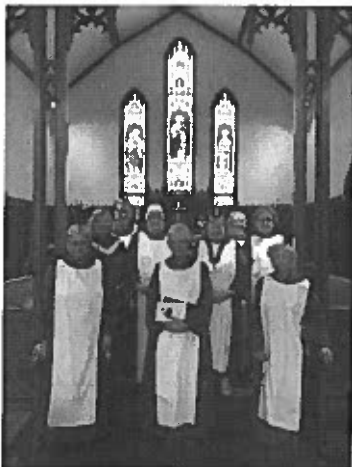
A dedicated group of 10 women pursue their ministry not only in our church, but also at weekly services at the Linhaven Home for Seniors two months a year. Their artistic talents transform our worship space in each liturgical season of the year.



### VOLUNTEERS THAT SUPPORT WEEKLY WORSHIP

---

Teams of Chalice Bearers, Sides people, Readers, Intercessors, and Counters contribute to our worship in these important ministries.



---

## COFFEE HOUR HOSTS

---

Coffee Hour following the 10 a.m. service is very well attended, providing regular members and newcomers alike a time to socialize over coffee, tea, and an array of baked goods. Our large team of hosts provides this popular hour year round. It's fun to hear the conversations and laughter at every table, affirming the feeling that this parish likes to gather in each other's company!



---

## CARING CIRCLE

---

A few dedicated volunteers send cards to the sick, bereaved, and shut-ins and arrange delivery of plants at Christmas. Many have identified this ministry as an area that could be expanded to reach out and connect in a purposeful way with even more of our membership.

A Parish member trained as a spiritual care visitor makes regular pastoral visits.

We have a group of additional parishioners who regularly make friendly visits to the ill or those unable to attend services. We are exploring increased use of email communication to engage those who are unable to physically attend but indicated by survey that they want to be more in touch.

## WOMEN'S GROUP

This vital, active group holds regular monthly meetings where they offer an opportunity for fellowship, fund raising, and organizing outreach to the community. They host speakers, go on field trips, and learn new skills such as rug hooking and weaving. The Women's Group provides much lauded catering for receptions and funerals as requested.



## PROPERTY COMMITTEE

---

This group of talented men share their skills and dedication to the parish to keep our church complex and grounds in good repair and compliant with municipal codes and by-laws. Their efforts help reduce our maintenance and repair costs. Every item on our decennial report has been attended to as of February, 2020.

## CEMETERY BOARD

---

St. John's has an iconic, historic cemetery on Main Street a few blocks away from the church. Our experienced team of volunteers has been recognized for the professionalism with which they see to the government regulated administration and excellent maintenance of this highly visible, wrought iron style fenced cemetery which serves not only congregation members but those beyond the parish. In 2019 the Cemetery Board restored many historic headstones.





---

### PRAYER SHAWLS

---

A dedicated group of knitters provide comforting wraps for anyone in need. Hundreds of shawls have been and continue to be blessed during our regular services and then delivered to grateful recipients- be they bereaved, in crisis, ill, shut-in, or celebrating the birth of a child. Our shawls have been distributed to hospitals and care facilities as well.

---

### MEN'S BREAKFASTS

---

Over twenty gentlemen meet regularly about ten times a year on Saturdays at a local restaurant for a morning of fellowship for fellowship's sake.

---

### ST. JOHN'S GARDENER'S

---

A group of volunteers lovingly tend the gardens and grounds of the parish announcing to passersby that St. John's is a cared for place. In the past, St. John's received a Trillium Award from the City of St. Catharines for enhancing the beauty of the community.

---

### GOOD FRIDAY WALKATHON FOR PWRDF

---

For over twenty years parishioners and extended family and their canine friends walk every Good Friday following service in memory of their loved ones who have passed away and to raise funds for the PWRDF. Led by a large wooden cross created by a parishioner for this walk, we wind our way through the village's business district down to the water's edge in Lakeside Park and back to the church to share in a communal midday meal. Thus far we have raised more than \$36 000 for this important cause. In 2019 the walkathon raised \$1310.65



## STEWARDSHIP

---



### *Growing In Faith Together Stewardship Program*

St John's had not participated in a fulsome stewardship campaign in years. Our envelope offerings were dramatically down in early 2019. Parish and diocesan level leadership established that a stewardship program could generate better envelope contributions and help identify the parish's potential for sustaining a fulltime or part-time rector. We chose The Mailout Campaign model from the diocese's 2017 Annual Gift Giving Manual.

The GIFT Program ran from September 15- October 29, 2019.

It involved four main aspects:

- 1) a visit from the Secretary of Synod Canon Bill Mous to explain our relationship with the diocese and what our DMM contributions do to support the diocese, other parishes, and programs in the diocese, and how the diocese supports us;
- 2) a Ministry Fair that tried to demonstrate all the many ministries and activities that exist here and to give opportunities for new areas of ministry that could enhance the growth of our parish and help others;
- 3) a September introductory letter and October mail out package to parishioners that aimed to identify participation in our ministries and household offering intentions for the coming year, to increase Pre Authorized Giving to stabilize our income throughout the year, and to encourage Legacy Gifts that can benefit future physical and outreach projects in the parish; and
- 4) a Pot Luck Celebration lunch that capped off the program which was very well attended and very well received (45+ attendees)

GIFT Committee members included the Wardens, Treasurer, Envelope Secretary, a former warden involved with pastoral and worship ministries, a member newer to the parish, and a long serving member with property committee and fundraising experience.

### Summary of our 2019 GIFT Stewardship Program:

- Lasting Stewardship Program Documents created: St. John's Parish Brochure, Parishioner Giving Ladder 2019, Intention Cards, Pre-Authorized Giving pamphlet, St. John's Legacy Gift brochure, Time and Talent Inventories.
- About 100 packages were mailed. More than 1/3 (38) were returned. We are making the assumption that no response might indicate status quo support and participation.
- These returns have been so informative and helpful. We have been touched by the prayerful responses that many have shared. All replies indicate continued levels of financial support or increases in annual giving. We are aware that many among us cannot increase their offerings and emphasized in all mailings that our best gift was their presence among us.
- PAP participation has been increased by 6 more households. From 16% to 24% of regular offerings. This will be very helpful for us especially during those lean months when offerings are lower but bills still need to be paid.
- The GIFT Program has initiated our move to more modern communication and access opportunities for the parish. Easy electronic donations to St John's is now possible with the creation of an account with CanadaHelps.org. We are intending to expand and improve our presence on our website and social media. Some shut-in parishioners have indicated they would like more email communication from the church to keep in touch with us.
- We are aware of more Legacy Gifts that some individuals have identified for St John's.
- The Inventory of Time and Talent responses (43 people) has really helped us identify the participants in various ministries. But what is very exciting, it gave responders an opportunity to indicate what ministries they might be interested in joining: 6 people are interested in starting a fitness/dance group, 3 more in doing scripture readings in our services, 1 in doing Grant Applications, 1 in keeping our outdoor sign messages current, 2 in joining Parish Council, and so on.
- The mail out has identified corrections needed in mailing addresses and email addresses. This is on-going. We are creating two parish contact lists- one with active parishioners and another that includes "the Friends of St John's". (See definition below)
- 16 information packages addressed to the Friends of St John's went out at the end of October. We hope to send out more in 2020. We are hopeful that these individuals and households who attend our services or help us out occasionally or whose families have had a long history with our parish will be willing to give us some financial support to help us sustain our ministry here in St. Catharines/Port Dalhousie. One sizable donation has already come in.
- We won't be able to truly analyze the impact of the program until the year progresses as some increase in offerings just began in January 2020. But our average monthly offerings are up.
- The next months are critical for St John's. Our financial health will identify if we can sustain a full time rector or if we need to readjust our vision. We need to increase our membership to sustain our future and to increase weekly offerings. Every study affirms that a positive, welcoming environment and purposeful Outreach programs are key elements to increasing and maintaining a congregation. St. John's is working hard to demonstrate this. We have so much optimism and goodwill.

## FUNDRAISERS

Teams of hardworking parishioners organize several fund raising events each year, some are annual events and others one time themes. Some have included: Peach Festival, Holy Cow BBQ's and paid parking during major rowing regattas, Taste of the Town, Roast Beef Dinner, Pub Night, Pancake Supper, Spring Plant Sale, Strawberry Social and Fashion Show. Not only do these events raise funds for operating expenses but they also help purchase identified items in our capital budget. The added bonus to these events is the fostering of relationships within the parish, the welcoming of those from the community, and highlighting the energy and presence of the parish in the town.



## COMFORT AND JOY FESTIVAL

This popular annual bazaar involves the majority of the congregation in one form or another. The Comfort and Joy Festival, held the first Saturday of December, is a highly anticipated event in the wider community and has become a major fiscal contributor to our budget. The months long preparations, donations, and participation on the day of this event foster a sense of team in the parish and attract newcomers to the parish family. On average Comfort and Joy raises between \$10 000 - \$12 000 yearly.



## HALL RENTALS

Over the decades, apart from regular one-time events such as showers, birthday celebrations, and funeral receptions, St. John's has been rented year-long for AA meetings and a wide variety of fitness programs. Increasingly, however, our complex, due to its location in Port, accessible elevator, parking lot, and well maintained facilities, is more and more appealing to outside organizations for long term rental. Just recently our local Royal Canadian Legion Branch #350, whose facilities have been demolished and await the construction of their new space, has found a home with us to stage their dinners and social evenings locally. The Scottish Club has found a new home with us to begin a new era for them in our halls as they enjoy weekly meetings and special events year round at reasonable cost and maintenance free comfort for them. We now welcome Recfit, a program for adults with life skill challenges, who use our facilities several times a week. Apart from providing a steady income for us, Parish Council has identified such long term rentals as opportunities for us to find partnerships to support their work and deepen the community's perception of our role in their everyday life.



---

## OUTREACH

---

---

### ALCOHOLICS ANONYMOUS

---

For decades, over 75 people meet in our halls every Monday evening. The parish is proud to support The Port Dalhousie Group.

---

### COMMUNITY CARE

---

Our modest sized parish donated over **2 tons of food in 2019** to help feed the hungry in our city. One thousand pounds more than last year! Each month, a particular food item identified by Community Care as particularly in demand is targeted in our bulletin. This monthly focus has been embraced by our congregation and donations have risen.

---

### RESOURCE ASSOCIATION FOR TEENS

---

Weekly donations of food and supplies are collected for R.A.F.T. and the parish gives a cheque annually to support their work.

---

### MILK BAGS

---

Hundreds of milk bags are collected monthly that are used by a local group to create portable, lightweight, hygienic sleeping mats for the homeless.

---

---

## DIGNITY KITS

---

Over the last 5 years, St. John's teamed up with St. Barnabas and St. Columba churches to gather hygiene supplies donated by parishioners to create kits to help the homeless and the at risk population in St. Catharines. Our Dignity Kit volunteers now work out of our own facilities with some St. Barnabas friends joining us. St. John's parishioners heartily contribute items for these kits. Over 1000 kits thus far have been gratefully received by agencies such as Start Me Up Niagara, Out of the Cold, Resource Association For Teens, and Gillian's Place (a support shelter for Women and Children who experience abuse). "Socks for Change" a new local charity that supplies military grade socks for those in need has now partnered with our Dignity Kit group to enhance the quality of these kits for winter.



---

## COMMUNITY CHARITIES

---

In 2018 and in recent years, St. John's donated \$10 000 annually from our budget to support several local and national charities. Due to income restraints in this transition, 2019 Vestry voted to suspend and revisit our financial outreach in the third quarter. A Mission Strategy Committee was formed and Parish Council voted to continue to help those beyond our walls, despite our present fiscal challenges. Thus, we identified a priority focus for our Outreach: to help those who are at risk for homelessness and hunger in the area. We donated \$2 000 to four agencies that help in these areas: Resource Association for Teens, Start Me Up Niagara, Out of the Cold, and Socks for Change that will donate warm socks and neck warmers for our Dignity Kits. 2020 Vestry voted to increase this Outreach to \$5 000 or more.



---

### PWRDF

---

Our congregation regularly supports the PWRDF. Between our annual Good Friday Walkathon and envelope offerings, St. John's forwarded \$3459 in 2018 to this important national outreach program. In 2019 we passed on \$3064.65.

---

### OUT OF THE COLD/ START ME UP NIAGARA

---

Our dear former Honorary Priest was a vibrant contact for these initiatives. St. John's heartily supported these programs by donations of money and clothing and volunteering at homeless breakfasts. We continue to promote their fundraising efforts and make donations of clothes and funds.

---

### OLD ELECTRONICS COLLECTION

---

To encourage safe disposal practices and care for the environment, a bin in our Narthex is provided to collect old electronic waste.

---

### REFUGEE SPONSORSHIP

---

In September 2017, after working two years within the parish and seeking partners in the local community, our parish raised over \$40 000 without diocesan financial aid to sponsor an Iraqi family of four from Jordan to a new life here in St. Catharines. Through wonderful donations and lots of elbow grease, a lovely apartment awaited them on their arrival. Several parishioners have supported them over this time with social visits, extra food and gifts, and help getting established. The family has been guests at the church various times. The two children are thriving at school and have mastered English. Now launched, the family recently moved into a townhouse on their own. They have welcomed a new baby, Adam, born in January 2019. At the end of our sponsorship program, \$6 000 in funds raised was sent to the diocese which will help other parishes in their sponsorships.



## PROPERTY

---

To quote a former rector, *"Our beautiful church means a great deal to us and so it should.*

*Architecturally, the church was designed to attract the eye upward and away from itself. Its stained glass windows and its belfry point heaven-ward to remind the viewer that this building was constructed to the glory of God; to draw the faithful to God. Furthermore, a church building always points beyond itself; to those who built and have sustained it through the years.....Their vision; Their faithfulness; Their love for God and one another."*

The church complex consists of the church, and upper and lower levels connected by a Narthex. The installation of an elevator has created a building that is accessible and barrier free. There are two chancel steps for which we make accommodations to help those with mobility issues.

(Please refer to attached blueprints for specific layout.)

## THE CHURCH

---



- Built in 1868, St. John's is one of the oldest churches in the area;
- It has maintained its Gothic architecture with a high vaulted ceiling and rood screen separating the nave from the sanctuary;
- 20 stained glass windows (also in slender, Gothic style) present Biblical themes and commemorate the lives and contributions of past generations. The windows are crafted exclusively in hand-blown glass and protected on the outside with clear coverings;
- A traditional interior, with dark oak pews, wooden plank floors and large pendant lighting provides an inviting and comforting setting for worship and prayer;
- Comfortable seating exists for about 150 people in the nave and 20 in the chancel;
- The sacristy is comprised of two rooms with ample storage for church hangings and the seasonal decor that the Altar Guild uses.

*While keeping its traditional appearance, a number of improvements have been added:*

- Our pipe organ, installed as a memorial to those members of the parish who gave their lives during WWI and WWII was installed in 1954. It was designed by local organist Eric Dowling and built by Keats Organ Company. It was converted to solid state in 1996 by Dubay Organs. It has been well maintained, with service now provided by Northern Organs.
- The sanctuary and choir pews were slightly reconfigured in the 1990's so that the altar could be moved away from the exterior wall of the church;
- Heating, air conditioning, and lighting have been improved;
- A sound system (that can also be connected to the Narthex and Smiley Hall) was installed;
- Designated accessible seating for those with mobility issues and their families has been provided;
- The kneelers have been padded and pew cushions are available for any who need them;
- Parking for 28 spaces was created in our back property.

## THE NARTHEX

---

- Our Narthex provides a friendly and protected area where people can meet, hang up their coats, and chat before and after church. It's accessible from the parking lot and Main Street and can be used for small events.



## THE UPPER LEVEL (SMILEY HALL)

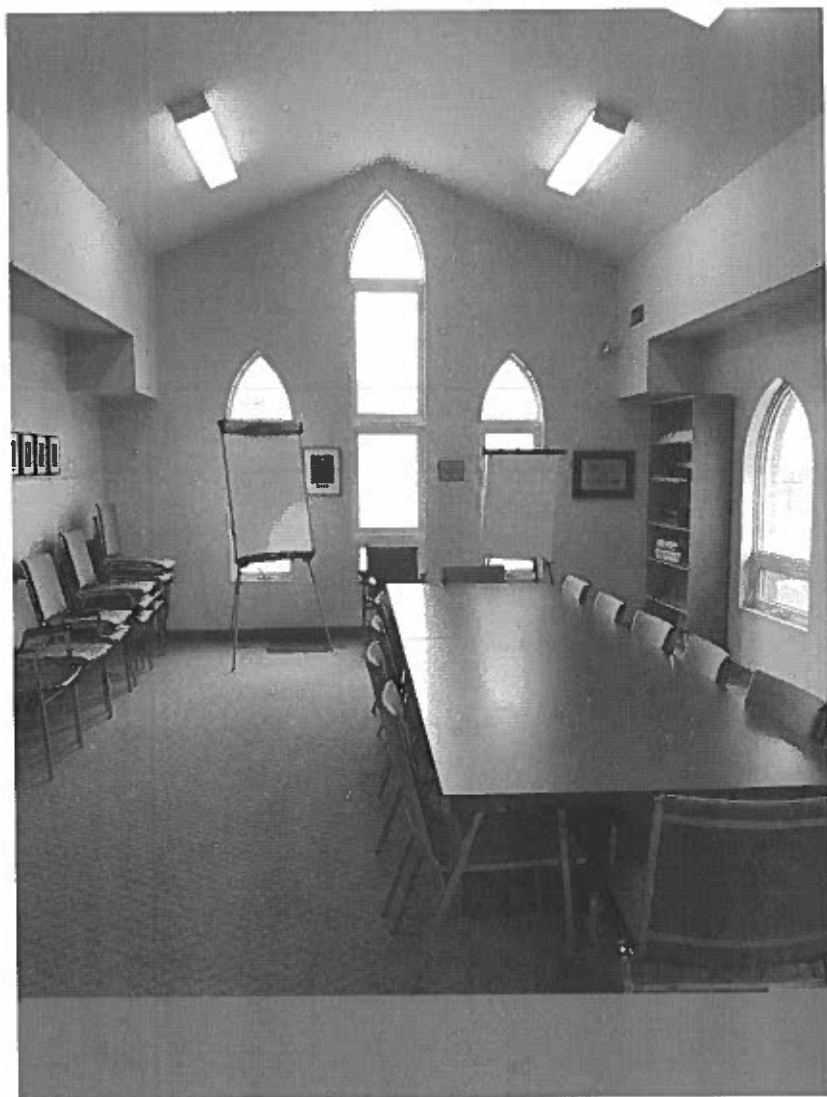
### Smiley Hall

- A centre hallway in this level separates Smiley Hall (named in honour of long-time parishioner Bill Smiley) from the rooms along the north side of the church where there are dedicated spaces for the rector, church administrator, the choir, and a work room which can be used for the cemetery board, counters, or other small groups as needed.
- Smiley Hall is a spacious room featuring a high, vaulted ceiling, hardwood floors, wainscoting and many windows to provide a bright and inviting venue for a multitude of events. An elevated stage across the end of the hall is accessible with stairs at each side. Stage lighting and a sound system make it very functional for many parish activities. The hall has a capacity of 115 (for sit down dinners) or 163 for other gatherings.



### The Russell Room

- This meeting room, named in honour of former priest David Russell, completes the main rooms of the upper level. It, too, has a vaulted ceiling, tall slender windows and an additional sink and cupboard space. Most formal meetings of 25 or less people are held in this room.



- Two washrooms and a mechanical room complete the upper level.

## THE LOWER LEVEL

---

- The lower level can be accessed via the elevator or one of two sets of stairs (from the Narthex or the foyer on the Main Street side of the building).
- The main hall on the lower level is used every Sunday as a gathering place for coffee and goodies after the 10:00 am service and is rented for many uses.



- Again, a centre hall separates the large hall and kitchen from a number of rooms designated for the Sunday School, Youth/Nursery Activities, and storage rooms for various groups.

### Kitchen

- Over the years, the kitchen has seen numerous renovations. It is now very functional and modern, with two fridges, two stoves, a commercial dishwasher, three separate sinks, a large centre island for prep, and ample cupboard space.
- The kitchen is regularly inspected and compliant with the Public Health Department.

### Nursery/ Children's Space

- A large and well-equipped nursery room is also located on this level – it has an abundance of toys and supplies for babies and pre-school aged children as well as a comfy couch to sooth babies or give folks a quiet space. The nursery has its own two piece bathroom and storage area.

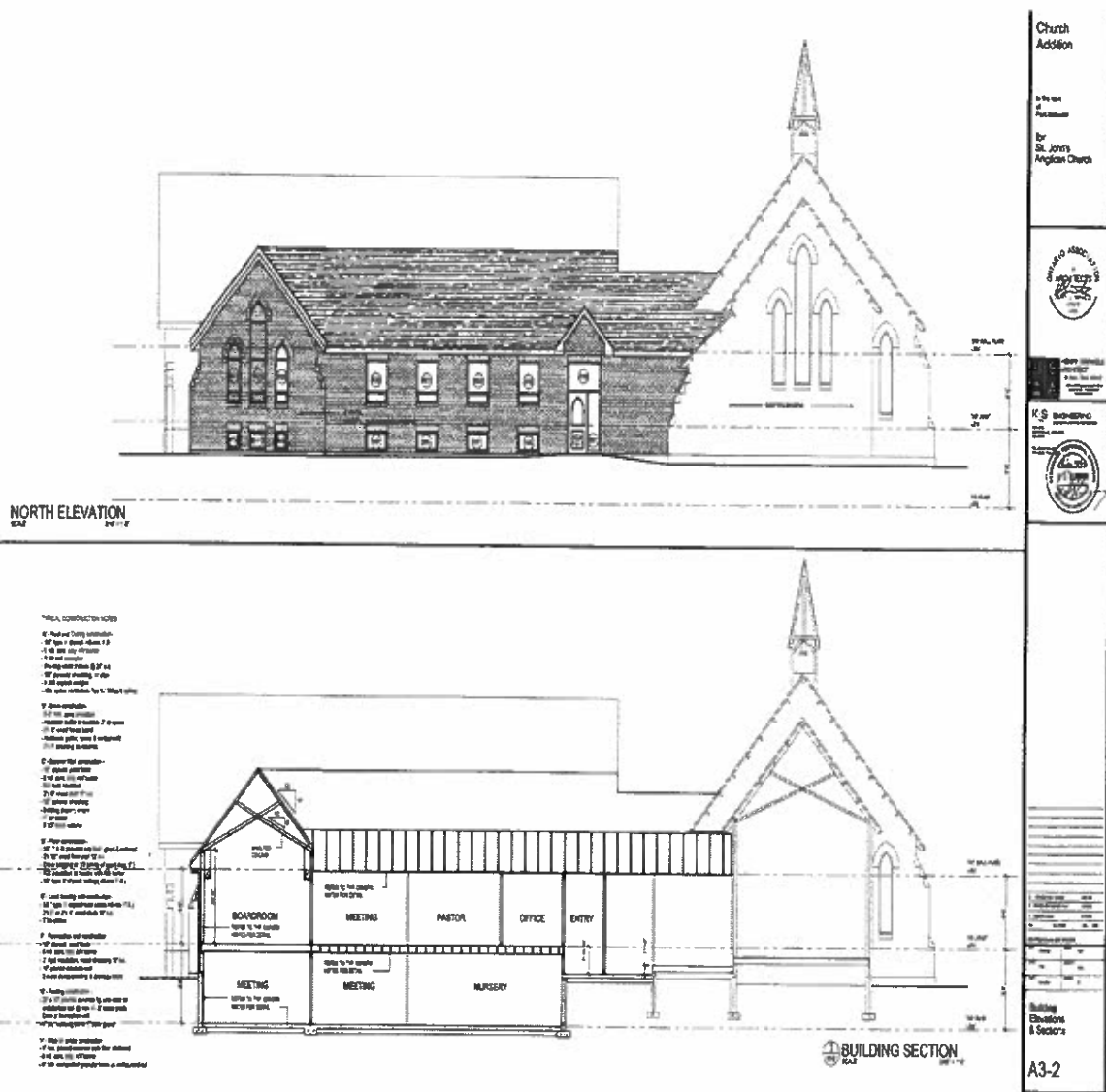


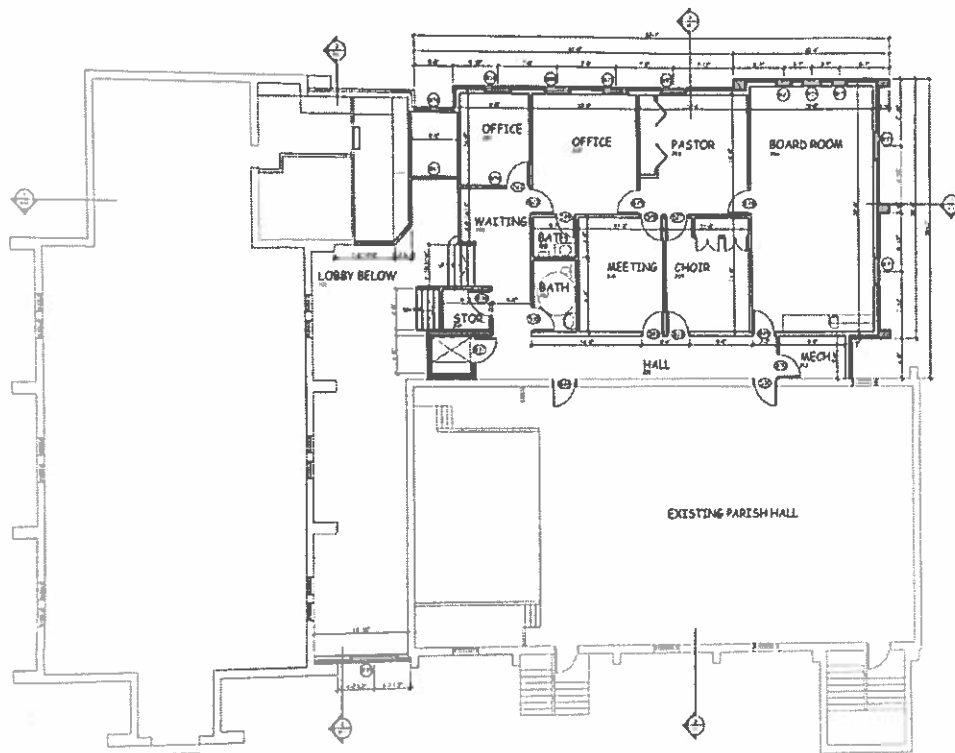
- An Accessible washroom and two sets of Men's and Women's washrooms are also located on the lower level.

Pursuant to our latest Decennial Inspection, all issues have been addressed!



## 33





UPPER FLOOR PLAN

Church Addition
Architect
For St. John's Anglican Church
DATE: 10/10/2010
BY: [Signature]
PROJECT: [Text]
REVISIONS:
1. [Text]
2. [Text]
3. [Text]
4. [Text]
5. [Text]
6. [Text]
7. [Text]
8. [Text]
9. [Text]
10. [Text]
11. [Text]
12. [Text]
13. [Text]
14. [Text]
15. [Text]
16. [Text]
17. [Text]
18. [Text]
19. [Text]
20. [Text]
21. [Text]
22. [Text]
23. [Text]
24. [Text]
25. [Text]
Upper Floor Plan
A2-3



## WIDER CHURCH

---

### FUTURES/GREATER ST. CATHARINES CONVERSATION

---

A committee of parishioners and our rector participated in this multi-year initiative sponsored by former Bishop Bird to look at the future way our cluster of Anglican Churches in the St. Catharines area could address meeting the needs of the faithful in the years ahead. We discussed the role of the church in an increasingly secular society, and how we can use the resources we have to best serve congregations and those in the community. St. John's hosted the Communications sub-committee meeting.

### PARTNERING WITH OTHER PARISHES

---

As described above, St. John's partnered with St. Columba and St. Barnabas in the creation of Dignity Kits for the homeless or at risk population.

In the recent past, several parishioners helped monthly at the Out of the Cold breakfast program held at St. Georges Church, a downtown parish. We donate money, food, and clothing to the program.

We promote the Candlemas Service held in early February at Market Square downtown to highlight the presence of the nine Anglican parishes in the St. Catharines area. We attend diocesan workshops held locally such as the workshop on Annual Giving Campaigns, the Bishop's area workshop for the Mission Action Plan, the Wardens' and Treasurers' Workshop, etc.

In the fall of 2019 we contacted three local churches for advice on the use of the Richmond Software program for tracking offerings and will call upon them for mentoring as we implement the program this year.

For years, St. John's joined the local Roman Catholic and United churches in Port Dalhousie to host revolving Lenten lunches and tri-church picnics on Henley Island. Although that tradition has faded with the closing of the United Church in town, our willingness to co-operate with our faith neighbours continues.

### REPRESENTATIVE OF THE NATIONAL CHURCH

---

Our most recent full time rector was the Primate of the Anglican Church of Canada's representative for two years at the United Nation's Status of Women Conference in New York City.

---

## SITUATION ANALYSIS

---

On March 31, 2019 following the 10 a.m. Eucharist, more than 60 parishioners gathered together to participate in an **Appreciative Inquiry** led by The Reverend Canon Terry DeForest and assisted by Ms Cathy McCann. The core values of our faith community were defined through the process of storytelling.

---

## CORE VALUES

---

- Sense of parish community with an emphasis on God as immanent (as opposed to transcendent)
- Characteristics of a congregation in which we value as reflections of our best selves: acceptance caring, warmth, honesty, welcoming, and inclusive
- Valuing the legacy of Anglican traditions
- Nurturing spiritual growth, expressed through inclusiveness, openness to doubt and questions, openness to shifting paradigms, joy expressed in music
- Outreach
- Community presence- visible presence in a wider community
- Community engagement through social justice-making and advocacy

---

## WISHES AND DREAMS

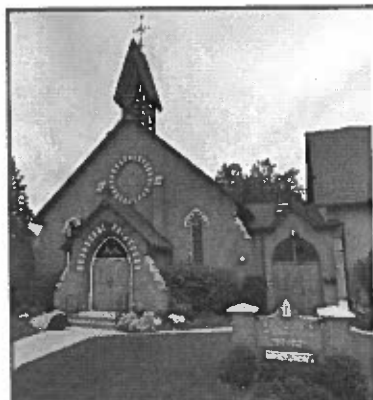
---

We dream of ongoing growth in the parish:

- Spiritually (including bible study) connecting our lives and the present world
- Financially
- Numerically
- In children and youth members and involvement
- In Outreach activities
- In a visible profile and presence in the community
- In a more diverse music ministry
- In our capacity for caring through pastoral teams
- In our parish's demographics becoming more like the demographics of the wider community
- In growing partnerships with members of the wider community.

## ST. JOHN'S MAIN FOCI AND PLANNED STRATEGIES AT THE PRESENT TIME

- Starting in June 2019, promoting the church and attracting new membership/visitors by inserting ads and interest articles in the local quarterly The Port Reporter that now has expanded its distribution area to the entire municipal ward. 8 000 copies are delivered.



An Open Invitation to Join Us at

*The Historic Church with Heart!*

Here at St. John's We Welcome Everyone, Regardless of Faith.  
Become a Part of our *Friendly and Inclusive Community*

Sing, Worship and Socialize  
Sunday Services at 8:00 a.m. and 10:00 a.m.  
A Wonderful Place to Spiritually Nurture Yourself and Your Family.  
Help us to Help Your Community and Those in Need

- Home of The Port Dalhousie Group AA Monday night meetings
- Branch #350 Port Dalhousie Royal Canadian Legion, dances and karaoke evenings
- The Scottish Club Wednesday evening meetings • special events
- Fitness classes offered both in the daytime and evenings.
- We are a **Warmer- Free Facility**

\* Hall Rentals Available for Small and Larger One Time Events, and Long Term

For More Information  
Contact us at 905.935.6021 or email: [stjohnschurch@copc.on.ca](mailto:stjohnschurch@copc.on.ca)  
Church Office hours Tuesdays and Thursdays 9 a.m.-1 p.m.  
[www.nagaranglican.ca/parch/st-johnst-catharines](http://www.nagaranglican.ca/parch/st-johnst-catharines)

Historic St. John's Church, 810 Main St., Port Dalhousie, ON L2N 4V2

- Creating a Mission Strategy Committee which was formed in November 2019. The committee's recommendations will help us tie in with Bishop Bell's Mission Action Planning.
- Fall stewardship campaign "Growing in Faith Together" which ran mid- September to the end of October 2019 and will be followed up in the fall of 2020.
- Opening our halls to the community: Planning with the Port Dalhousie Legion Branch #350 to host post Remembrance Day ceremony receptions in our halls in November. Partnering with the BWC, Port Dalhousie's Beautification and Works Committee, to jointly host events like the Candlelight Stroll and to support each other's initiatives when appropriate.
- Promoting traditional and new forms of fundraising events.
- Seeking diocesan support to strengthen our skills in effectively welcoming visitors and potential newcomers. Eliciting volunteers to spearhead these efforts.
- Improving our range of communication strategies including improved website and use of social media.
- Increasing our membership by 5-10 households per year.
- Embracing environmental initiatives i.e. Improved recycling/composting and the elimination of single use plastics.

## WHAT DO YOU CONSIDER TO BE YOUR PARISH'S PART IN GOD'S MISSION?

An historic church that has adapted and survived through the decades, our mission is to support the vision and principles of every generation while rejoicing in the Anglican tradition of worship.

We are inclusive. We support the Diocese of Niagara's position on Equal Marriage.

We are willing to explore faith outside the church building e.g. Church in the Pub or Coffee Shop.

We are very supportive of Outreach both locally and beyond, but know we can do even more to engage in social justice and environmental initiatives.

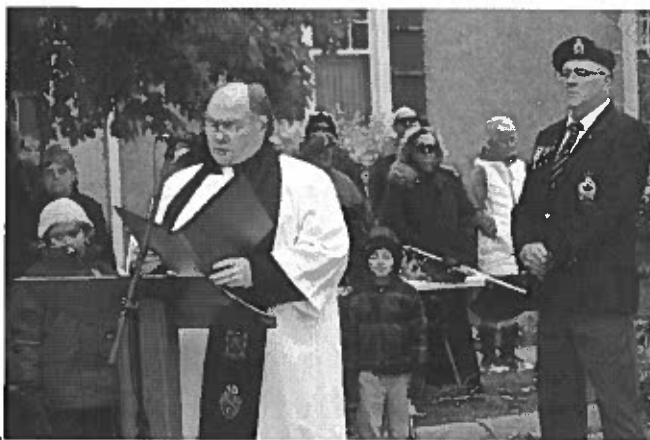
## WHAT IS SPECIAL ABOUT YOUR PARISH?

---

- Our historic church is a lovely and inviting structure whose parishioners give warm welcomes to visitors and potential new members alike.



- We are well regarded in the community and acknowledged for being very active and social.
- We are an important part of the fabric of the town. Just across the street from the cenotaph, we play an integral part in Remembrance Day services and our members regularly participate in the annual village Candlelight Stroll at Christmas.



- Our church enjoys a special relationship with local annual events- for years our rectors have been invited to be padre for the annual Blessing of the Fleet at the Port Dalhousie Yacht Club and padre for the Remembrance Day ceremony at the cenotaph. Relationships have deepened recently with the BWC (Beautification and Works Committee), an active village group that works

to engage local citizens to beautify the town. They helped us raise funds for the Refugee Sponsorship and we promote and engage in their activities and fundraisers.

- We love our history of “performance” and fellowship on our stage in Smiley Hall where musical shows, mystery plays written by our playwright parishioner, and Pub Night talent evenings have regaled us for decades.



- St. John's is blessed with an active congregation that hosts very successful special events year round providing support income for the parish and loads of fellowship. We are happy to be together in fellowship and laughter and in empathy during the tough times in life.
- Although we are not an inner city church, we are proud of our attempts to help those in need and we are committed to Outreach.

**AN AMAZING OPPORTUNITY:** Sitting on Main Street in a highly visible location, St. John's is poised in the next few years to enjoy potential congregational growth as hundreds of luxury condominiums are being built a mere few blocks away on the waterfront of this walkable community. As we continue to evolve, we are eager to forge new partnerships and strengthen existing ones to confirm the relevance of our mission and re-establish St. John's once again as a hub in the community.



## WHAT ARE THE MAIN ISSUES AND CONCERNS YOUR PARISH HAS IN PURSUING ITS PART IN GOD'S MISSION?

---

- Regaining our place in ministry in the local community.
- Providing relevant experiences and appeal for all generations, balancing tradition and change.
- Serving the needs of an ageing congregation who has recently lost many active members.
- Avoiding burnout for our hard working parishioners.
- Maintaining our solid financial standing.

## WHAT IS THE CLIMATE OF THE CHURCH AT THE PRESENT TIME?

---

Optimism and hope are alive again at St John's following the very difficult loss of our Rector and the resultant departure of several very active, talented members in the parish. Since the late fall of 2018, our interim pastor, with the support of our bishop, has facilitated a period of consultation and healing where parishioners have worked hard to mend rifts and to embrace the future and the new way of doing things. There is a greater depth of understanding, tolerance, and acceptance at St. John's. We have taken many first steps to rediscover our ministry. Parishioners have stepped forward to fill vacated positions and to raise funds to restore the parish to its former healthy financial status. There is more confidence and laughter. People are looking much more to the future than to the past. After much reflection and prayer, the congregation has identified many short and long term goals that it is excited to undertake. We are looking forward to a new engaging ministry under the guidance and inspiration of a new rector!

## DESIRABLE CHARACTERISTICS OF OUR NEW RECTOR

---

### A PERSON WITH GOOD RELATIONSHIP SKILLS:

---

a good listener, a good communicator, able to relate to people of all ages, exhibits sensitivity, diplomacy skills, a sense of humour, self-aware, personable, warm, mature, and confident.

### A PERSON WITH DEMONSTRATED LEADERSHIP SKILLS:

---

collaborative, consultative, able to work in partnerships and teams, shares leadership, enables others to embrace their outreach and community engagement ministries, prepared to lead through change, promotes the well-being of the church as a high priority.

### A PERSON WITH MINISTRY KNOWLEDGE, SKILLS, AND EXPERIENCE:

---

experienced in parish ministry, a good speaker, able to cast an exciting/engaging vision, passionate for social justice, able to honour both tradition and innovation, experience with and supportive of a diversity of music ministries. Our church vision is currently under construction. We are seeking new leadership during this journey to walk with us as we carve a new future.

---

## FINANCES

### Actuals and Proposed Budgets:

#### Expenses

	<b>2018</b>	<b>2019</b>	<b>2020</b>	<b>2021</b>
	<b>Actual</b>	<b>Actual</b>	<b>Proposed</b>	<b>Projected</b>
<b>Salaries</b>				
Rector	\$ 49,515.00	\$ 9,080.04	\$ 32,375.00	\$ 56,610.00
Living allowance	\$ 19,800.00	\$ 4,540.29	\$ 12,540.00	\$ 21,500.00
Total Benefits	\$ 19,700.00	\$ 3,515.54	\$ 19,813.00	\$ 21,000.00
Office Administrator	\$ 6,077.60	\$ 6,046.56	\$ 9,090.00	\$ 9,280.00
Organist	\$ 9,488.04	\$ 9,749.28	\$ 9,935.00	\$ 10,134.00
Sexton	\$ 8,544.96	\$ 8,800.92	\$ 8,968.00	\$ 9,147.00
Supply Clergy	\$ 1,457.00	\$ 1,635.00	\$ 1,500.00	\$ 1,680.00
Interim Clergy	\$ 4,748.00	\$ 27,240.12	\$ 15,420.00	
Living Allowance	\$ 2,374.00	\$ 13,620.87	\$ 5,783.00	
Misc.	\$ 158.16	\$ 188.87	\$ 200.00	\$ 200.00
Honoraria	\$ 1,275.00	\$ 1,275.00	\$ 1,275.00	\$ 1,350.00
<b>Sub Total Personnel</b>	<b>\$ 123,137.76</b>	<b>\$ 85,692.49</b>	<b>\$ 116,899.00</b>	<b>\$ 130,901.00</b>

<b>Office</b>	<b>2018</b>	<b>2019</b>	<b>2020</b>	<b>2021</b>
Copier Lease	\$ 3,524.00	\$ 1,241.00	\$ 1,400.00	\$ 1,500.00
Supplies & Expenses	\$ 2,141.00	\$ 3,500.00	\$ 2,500.00	\$ 2,800.00
Bank Charges	\$ 83.00	\$ 774.00	\$ 500.00	\$ 500.00
Synod Fees & Misc.	\$ 285.00	\$ 265.00	\$ 450.00	\$ 500.00
Fund Raising Expenses	\$ 0.00	\$ 749.00	\$ 1,000.00	\$ 1,100.00
<b>Sub Total Office</b>	<b>\$ 6,033.00</b>	<b>\$ 6,529.00</b>	<b>\$ 5,850.00</b>	<b>\$ 6,400.00</b>

<b>Building Costs</b>	<b>2018</b>	<b>2019</b>	<b>2020</b>	<b>2021</b>
Insurance	\$ 10,417.40	\$ 10,319.42	\$10,644.57	\$10,857.46
Electricity	\$ 3,068.00	\$ 3,393.00	\$ 3,500.00	\$ 3,800.00
Natural Gas	\$ 5,243.00	\$ 4,920.00	\$ 5,000.00	\$ 5,200.00
Water & Heater	\$ 241.00	\$ 75.00	\$ 1,275.00	\$ 1,300.00
Interior Maintenance	\$ 4,401.00	\$ 4,851.00	\$ 5,000.00	\$ 5,000.00
Exterior Maintenance	\$ 210.00	\$ 2,378.00	\$ 2,500.00	\$ 3,000.00
Capital Expenditures	\$ 0.00	\$ 0.00	\$ 0.00	\$ 0.00
Yard Work Contract	\$ 2,378.00	\$ 1,545.00	\$ 1,500.00	\$ 1,600.00
Snow Removal	\$ 1,500.00	\$ 613.00	\$ 1,000.00	\$ 1,200.00
Security Alarms	\$ 755.00	\$ 2,885.00	\$ 1,000.00	\$ 1,020.00
Elevator	\$ 2,885.00	\$ 603.00	\$ 1,000.00	\$ 1,020.00
<b>Sub Total Building</b>	<b>\$ 31,098.40</b>	<b>\$31,582.42</b>	<b>\$32,419.57</b>	<b>\$33,997.46</b>

<b>Ministry</b>	<b>2018</b>	<b>2019</b>	<b>2020</b>	<b>2021</b>
Worship Supplies	\$ 1,331.00	\$ 2,100.00	\$ 2,500.00	\$ 2,500.00
Diocesan M & M	\$ 29,991.00	\$ 29,713.00	\$26,135.00	\$ 30,000.00
Sunday School	\$ 75.00	\$ 166.00	\$ 150.00	\$ 150.00
Advertising	\$ 0.00	\$ 0.00	\$ 1,200.00	\$ 1,300.00
PWRDF	\$ 3,459.00	\$ 3,064.00	\$ 3,600.00	\$ 3,700.00
Local Outreach	\$ 10,000.00	\$ 3,500.00	\$ 5,000.00	\$ 5,000.00
Special Discretionary	\$ 0.00	\$ 0.00	\$ 1,600.00	\$ 1,600.00
New Initiatives	\$ 0.00	\$ 0.00	\$ 1,000.00	\$ 1,000.00
<b>Sub Total Ministry</b>	<b>\$44,856.00</b>	<b>\$38,543.00</b>	<b>\$41,185.00</b>	<b>\$45,250.00</b>

<b>TOTAL EXPENSES</b>	<b>\$205,125.16</b>	<b>\$162,346.91</b>	<b>\$196,353.57</b>	<b>\$216,548.46</b>
-----------------------	---------------------	---------------------	---------------------	---------------------

## **Estimated Income**

<b>Source</b>	<b>2018</b>	<b>2019</b>	<b>2020</b>	<b>2021</b>
<b>Opening Balance</b>			\$ 11,447.00	\$ 7,318.43
ROI Funds	\$ 10,000.00	\$ 30,432.00	\$ 15,000.00	\$ 16,000.00
Envelope Offerings	\$108,125.00	\$ 95,222.60	\$105,000.00	\$112,000.00
Open Offerings	\$ 2,497.00	\$ 2,239.00	\$ 2,500.00	\$ 2,500.00
Initial	\$ 272.00	\$ 360.00	\$ 300.00	\$ 350.00
Easter	\$ 3,012.00	\$ 1,817.00	\$ 2,500.00	\$ 2,700.00
Thanksgiving	\$ 2,042.00	\$ 785.00	\$ 2,000.00	\$ 2,100.00
Christmas	\$ 7,267.00	\$10,123.00	\$ 11,000.00	\$11,500.00
Building Fund	\$ 250.00	\$ 250.00	\$ 250.00	\$ 250.00
Altar Guild	\$ 250.00	\$ 80.00	\$ 100.00	\$ 100.00
Memorial Flowers	\$ 375.00	\$ 1,780.00	\$ 1,800.00	\$ 1,950.00
Non Parishioner	\$ 658.00	\$ 500.00	\$ 400.00	\$ 2,500.00
Non Receipted	\$ 2,847.00	\$ 3,378.00	\$ 2,200.00	\$ 2,500.00
Memorial	\$ 8,787.00	\$ 650.00	\$ 650.00	\$ 1,500.00
Memorial Candles	\$ 205.00	\$ 230.00	\$ 230.00	\$ 250.00
Funerals		\$ 1,794.00	\$ 2,500.00	\$ 2,500.00
Hall Rentals	\$ 5,845.00	\$ 9,647.50	\$10,500.00	\$12,000.00
Office Space	\$ 4,800.00	\$ 4,800.00	\$ 4,800.00	\$ 4,800.00
Storage Fees	\$ 0.00	\$ 560.00	\$ 500.00	\$ 600.00
Coffee Hour	\$ 1,191.00	\$ 1,725.74	\$ 1,800.00	\$ 1,900.00
Fund Raising	\$ 21,978.00	\$22,945.00	\$24,000.00	\$30,000.00
Interest on Acc'ts earned	\$ 422.58	\$ 590.47	\$ 595.00	\$ 600.00
PWRDF	\$ 3,459.00	\$ 3,064.00	\$ 3,600.00	\$ 3,700.00
<b>ACTUAL/ESTIMATED INCOME</b>	<b>\$184,282.58</b>	<b>\$192,973.31</b>		
<b>ESTIMATED INCOME</b>			<b>\$203,672.00</b>	<b>\$219,618.43</b>
<b>YEAR END BALANCE</b>	<b>-\$20,842.58</b>	<b>\$30,626.40</b>	<b>\$7,318.43</b>	<b>\$3,069.97</b>

***See balance sheet for 2019 and Income Statements for 2019 in the Appendix***

## Budget Explanations

### Salaries:

Salaries estimated as fulltime: 2020 for 7 months at \$55 500. 2021 for 12 months with 2% COLA.

Living Allowance based on \$19800 in 2019 and \$21500 in 2020.

Miscellaneous includes police check, gratuities, Parochial Committee expenses, etc.

Honoraria include Treasurer \$850 and Envelope Secretary \$425

Moving Costs for a new rector not included. Would be taken from our Building Fund.

### Office:

Copier lease and expenses dropped dramatically in 2020 and 2021 due to new photocopier and contract.

Bank charges less due to surplus rather than deficit balances.

Office Administrator works two 4 hour shifts per week plus overtime.

Ultimate goal is to increase scheduled office hours.

### Building Costs:

Maintenance costs kept level since intention for future restoration work to be funded by Memorial donations, grants, and special fund raisers. We now have a Grant Application coordinator and Suggested Memorial Gift List which may result in donations toward special upgrades and restoration repairs. All actions from Decennial Report fulfilled.

Significant repairs undertaken for Elevator and Security Alarms in 2018 and 2019. Thus only scheduled Inspections and testing anticipated.

### Ministry:

2021 DM+M reflects return to normal assessment. 2020 assessment lower due to special request to diocese to take our transition financial challenges into account.

PWRDF: Reflect income from Offering envelopes and annual Good Friday Walkathon and payment to the National Church.

Donations to Local Outreach dropped to \$2 000 in 2019 due to financial challenges in transition. Raised to \$5 000 in 2020 with the intention to increase if Income is higher than projected. Similar plans to increase up to \$10 000, our previous level in past years, in 2021 if possible. Our Mission Strategy Committee reviews and advises the Corporation in the fourth quarter of the year.

### Sources of Income:

Unrestricted Funds: Unusually high return in 2019. 2020 Proposed Income based on 6.2%, 10 year diocesan average on returns. Loss of 20 households in late 2018 with resulting drop in income. Our goal is to increase member households by 5 to 10 in 2020 and again in 2021. Hundreds of condominiums scheduled to be built blocks away will not be inhabited for another 2-5 years, but potential for new membership exists due to increased Community partnerships, advertisements in our quarterly local newspaper, and renewed optimism in the parish.

Full six week Giving In Faith Together (G.I.F.T.) stewardship campaign in the fall of 2019 helped increase offering pledges and the increased number of pre-authorized giving participants will help stabilize income in the low months of 2020. Another GIFT mailing planned for Fall 2020 and an expanded "Friends of St. John's" mail campaign for Spring 2020 should provide increased donations. No mailings for Easter and Thanksgiving envelopes in 2019. They will resume in 2020 and 2021, resulting in higher projected income. Hall Rentals projected to increase in 2021 due to increase in fees. Due to energized volunteer base, increased number of coordinators in place for our upcoming major fundraising events. 2018 Deficit paid off.

## PREPARATION OF THE PARISH PROFILE

---

*Due to the generosity of Bishop Susan Bell and the Reverend Canon Terry DeForest, Director of Parish Development for the Diocese of Niagara, the leadership of St John's was able to deeply involve the great majority of our membership in order to receive meaningful input to help our Parochial Committee create our Church Profiles:*

1. Town Hall Meetings in November and December 2018 led by the Venerable Bruce McPetrie;
2. Parish-wide Survey distributed in mid-March 2019 at services and by email. (see Appendix);
3. *Appreciative Inquiry* on March 31, 2019 led by the Venerable Canon Terry DeForest and assisted by Ms. Cathy McMann;
4. *Our Vision of Leadership* on April 15, 2019 with Parish Council and many interested parishioners led by the Reverend Canon Terry DeForest;
5. Several meetings of the Parochial Committee in 2019 to discuss parishioner input and to write our first profile.
6. After additional time given by Bishop Bell for the parish to demonstrate our ability to improve our financial circumstances and to discern our mission, additional meetings in January and February 2020 of the Parochial Committee to recreate our new Parish Profile with the support of Cathy McCann, Archdeacon Max Woolaver, and Archdeacon Bruce McPetrie.

## MEMBERS OF THE PAROCHIAL COMMITTEE:

---

**Wardens:** Sue Thibodeau and Bruce Timms.

**Lay Delegates:** Marlene Pinder (and Susan Thibodeau).

Maree Graham, former warden, given permission to join the committee by Bishop Bell.

**Assistance provided by:**

The Reverend Canon Terry DeForest .

Priest-in-Charge The Venerable Bruce McPetrie.

Diocesan Consultant Cathy McCann.

The Venerable Max Woolaver.





## **Appendix**

- 2019 Property Insurance Schedule
- 2019 Balance Sheet
- 2020 Budget for Vestry
- Port Reporter article on history of St. John's and Parish advertisement sample
- Parish Survey March 2019
- St. Catharines Standard articles on Condominium Developments in town
- Stewardship Campaign (G.I.F.T.) materials

**Not attached but available:**

**2020 Vestry Report**

**St. Catharines Niagara Information Package from City Hall**



## ASSET

### CURRENT ASSETS

Meridian - General Chequing Account	11,447.19	
Meridian Acc't # 1 - Memorial Fund	17,334.92	
Acc't # 2 - Nursery/Sunday School/Youth	237.93	
Meridian Acc't # 3 - Womens Group	1,711.98	
Meridian Acc't # 4 - Building Fund	28,427.81	
Meridian Acc't # 6 - Altar Guild	1,590.51	
Cash in Bank - Total		60,850.34
Bequest Fund - General - Restricted	55,802.90	
Bequest - General - Investment Gain	13,461.49	
Bequest - General - Payment	-6,232.40	
Total - General Bequest Funds		63,031.99
Bequest Fund - Smiley - Restricted	25,000.00	
Bequest - Smiley - Investment Gains	6,388.84	
Bequest - Smiley - Payment	-5,311.60	
Total - Smiley Bequest Funds		26,077.24
Rectory Fund - Restricted	126,905.00	
Rectory - Investment Gains	42,740.36	
Rectory Fund - Payment	-24,156.00	
Total Rectory Fund		145,489.36
Meridian - Credit Union Shares		1.00
Deposits - Receivable		8,444.00
Petty Cash		100.00
<b>TOTAL CURRENT ASSETS</b>		<b>303,993.93</b>

### FIXED ASSETS

Capital Assets - Computers, etc	1,766.97	
Contents - at Insured Value	259,923.00	
Church, Hall & Offices - Insured Val	2,982,372.00	
Church Land - excl cemetery	200,000.00	
Church, P.Hall, Offices & Contents		3,447,061.97
<b>TOTAL FIXED ASSETS</b>		<b>3,447,061.97</b>

**TOTAL ASSET** **3,751,055.90**

## LIABILITY

### CURRENT LIABILITIES

Accounts Payable		2,965.03
Parish GST Rebate (50% of 5%)	-748.64	
Parish PST Rebate (82% of 8%)	-1,896.35	
Total Refundable HST on Purchases		-2,644.99
<b>TOTAL CURRENT LIABILITIES</b>		<b>320.04</b>

**TOTAL LIABILITY** **320.04**

## EQUITY

### EARNINGS

Retained Earnings	3,720,556.33	
Current Earnings	30,179.53	
<b>TOTAL EARNINGS</b>	<b>3,750,735.86</b>	

St. John's Anglican Church  
Balance Sheet As at 2019-12-31

TOTAL EQUITY

3,750,735.86

LIABILITIES AND EQUITY

3,751,055.90

Vestry 2020

	2020 Budget	Actual 2019-01-01 to 2019-12-31	Actual 2018-01-01 to 2018-12-31	Actual 2017-01-01 to 2017-12-31	Actual 2016-01-01 to 2016-12-31	
<b>SALARIES &amp; ALLOWANCES</b>						
Salary - Rector	35,319.05	9,080.04	49,515.00	48,416.04	47,408.04	salary based on full time minister from June 1 to Dec 31st, plus 1.9% increase
Salary - Organist & Choir Director	9,935.00	9,749.29	9,488.04	9,292.32	9,155.52	Increased by 1.9%
Salary - Administrative Assistant	9,090.00	6,046.56	6,077.60	6,311.98	6,992.41	calculated over 1 year tenure plus 1.9% increase - includes overtime
Salary - Supply Clergy	1,500.00	1,635.00	1,457.00	886.00	965.00	based on 1 Sunday per month away for Priest in Charge
Salary - Sexton	8,968.00	8,800.92	8,544.96	8,368.68	8,244.96	increased by 1.9%
Salary - Interim Rector	15,420.00	27,240.12	4,748.00	-	-	calculated from Jan 1 to May 31 plus 1.9% increase
Honorarium - Envelope Secretary	425.00	425.00	425.00	425.00	425.00	no changes
Honorarium - Treasurer	850.00	850.00	850.00	850.00	850.00	no changes
Gratuities & Thank you's	-	0.00	158.16	319.96	-	
Medical/Dental/AD&D	1,685.00	0.00	1,652.64	1,557.00	1,461.84	based on previous Minister's earnings
Long Term Disability (LTD)	1,918.00	0.00	1,881.60	1,839.84	1,801.55	based on previous Minister's earnings
Term Life Insurance	275.00	0.00	270.00	270.00	280.80	based on previous Minister's earnings
CPP Expense - St Johns portion	2,500.00	1,848.37	2,644.53	2,399.12	2,388.65	based on previous Minister's earnings
EI Expense - St Johns portion	1,600.00	1,341.44	1,508.25	1,366.25	1,521.06	based on previous Minister's earnings
WSIB Premiums	750.00	325.73	757.00	734.93	789.78	based on previous Minister's earnings
New Hire Police Check	-	100.00	0.00	-	-	
Parochial Committee	100.00	88.87	0.00	-	-	
Rector's Housing Allowance	19,800.00	4,540.29	19,800.00	18,000.00	14,252.04	based on previous Minister's earnings
Interim Rector's Housing Allowance	-	13,620.87	2,374.00	-	-	
Parish Pension - St. Johns Portion	10,500.00	0.00	10,457.61	10,225.45	10,012.57	based on previous Minister's earnings
Estate Benefit	85.00	0.00	80.04	80.04	80.04	based on previous Minister's earnings
Continuing Education - Rector	500.00	0.00	450.00	450.00	450.00	based on previous Minister's earnings
<b>TOTAL SALARIES &amp; ALLOWANCES</b>	<b>121,220.05</b>	<b>85,692.50</b>	<b>123,139.43</b>	<b>111,792.61</b>	<b>107,079.26</b>	
<b>CHURCH, HALL &amp; OFFICE</b>						
Church (Worship)	2,500.00	2,100.39	1,331.04	1,258.54	1,730.89	expenses increased to reflect increasing costs
Altar Guild - Flower Expenses	500.00	263.89	655.60	354.04	-	
Office	1,200.00	1,033.32	43.02	624.32	1,320.90	
Photocopier Supplies	150.00	100.65	410.07	343.87	521.78	
Photocopier Lease	1,236.00	2,041.80	3,524.70	-	-	
Cleaning Supplies	350.00	253.33	328.47	355.88	-	
Natural Gas	5,500.00	4,920.55	5,243.99	4,455.06	4,586.03	
Hot Water Heater Rental	75.00	74.32	219.13	219.13	-	
Insurance - Bldg & Contents	10,844.57	10,319.42	10,417.40	8,954.21	9,822.44	actual numbers for 2020
Electricity	3,500.00	3,393.05	3,068.43	3,587.25	5,281.58	
Water	1,200.00	1,147.17	640.31	621.04	693.77	
Org. Choir	750.00	754.24	1,072.45	988.74	1,295.30	
Postage	250.00	93.55	203.66	231.67	823.76	
Repairs & Maintenance	5,000.00	4,851.12	4,400.70	3,868.78	2,359.02	
Church Yard Expenses	2,500.00	2,378.06	210.91	-	561.12	
Grass Cutting & Yard Work Contract	1,600.00	1,545.00	1,500.00	1,470.00	1,450.00	
Snow Removal Contract	1,500.00	613.24	0.00	3,118.20	5,468.80	
Telephone, Long Distance & Internet	2,000.00	1,835.48	1,100.22	1,028.76	857.48	
Security & Fire Alarm Systems	1,000.00	1,258.70	775.39	436.43	271.06	
Elevator Maintenance & Licence	1,000.00	2,884.87	603.58	739.24	664.41	
Diocesan Ministry & Mission	28,135.52	29,712.79	28,991.55	25,498.57	21,303.67	actual numbers for 2020
Bank Charges & Interest Paid	775.00	774.59	82.47	-	-	
Synod & Youth Delegate Fees	450.00	195.00	285.00	240.00	495.00	
Parish - Fund Raising Expenses	500.00	748.52	365.86	-	102.35	fund raising expenses will increase over 2020 due to receipts to be submitted
Taste of the Town Fund Raising Exp	500.00	0.00	324.00	-	-	
Way-Off-Broadway Fund Raising Exp	500.00	514.33	747.97	520.72	-	
Womens Group Fund Raising Exp	1,200.00	1,109.95	315.28	-	-	
G.I.F.T. fundraising expenses	250.00	749.69	0.00	-	-	decreased this year but still reflecting smaller program this fall
Comfort & Joy Fund Raising Expenses	750.00	133.83	30.13	2,086.71	-	
Sunday School Expenses	-	165.56	74.80	326.60	924.44	
Misc. Expense	-	1.74	265.63	-	1,060.00	
Discretionary & New Initiatives	2,600.00	-	-	-	-	new item as/B McPetrie
<b>TOTAL CHURCH EXPENSES</b>	<b>78,118.09</b>	<b>75,968.15</b>	<b>67,231.76</b>	<b>61,327.76</b>	<b>61,593.81</b>	
Outreach - PWRDF	3,300.00	3,064.65	3,459.00	3,613.00	2,824.00	based on contributions and Good Friday Walk
Outreach - Bethlehem Place	-	0.00	1,250.00	1,250.00	1,250.00	
Outreach - Start Me Up Niagara	500.00	500.00	1,250.00	1,250.00	1,250.00	outreach funds set at \$500 each, could be increased dependant upon 3rd quarter financial reports
Outreach - Community Care	-	0.00	1,250.00	1,250.00	1,250.00	
Outreach - I.C.A.	-	0.00	1,250.00	1,250.00	1,250.00	
Outreach - Out of the Cold	500.00	500.00	1,250.00	1,250.00	1,250.00	
Outreach - Brain Injury Association	-	0.00	1,250.00	1,250.00	1,250.00	
Outreach - (RAFT) Niagara Resource	500.00	500.00	1,250.00	1,250.00	1,250.00	
Outreach - Gillian's Place	-	0.00	1,250.00	1,250.00	1,250.00	
Outreach - BME Church - Salem Chapel	-	0.00	200.00	-	-	
Outreach - Socks for Change	500.00	500.00	0.00	-	-	
Outreach - Refugee Sponsorship	-	0.00	6,218.99	29,512.63	1,057.61	
<b>TOTAL OUTREACH</b>	<b>5,300.00</b>	<b>5,064.65</b>	<b>19,878.99</b>	<b>43,125.63</b>	<b>13,881.61</b>	
<b>TOTAL EXPENSE</b>	<b>202,636.14</b>	<b>166,725.30</b>	<b>210,250.18</b>	<b>216,246.00</b>	<b>182,554.68</b>	

St John's Anglican Church  
2020 Budget

	2020 Budget	Actual 2019-01-01 to 2019-12-31	Actual 2018-01-01 to 2018-12-31	Actual 2017-01-01 to 2017-12-31	Actual 2016-01-01 to 2016-12-31	
<b>RECEIPTS</b>						
Offerings - Envelopes	100,000.00	95,222.60	108,125.62	108,944.06	114,671.76	envelope offerings were increased due to G.I.F.T. program
Offerings - Open	2,500.00	2,239.51	2,497.00	2,090.50	2,652.45	
Offerings - Initial	300.00	360.00	272.00	274.00	200.00	
Offerings - Easter	2,500.00	1,817.00	3,012.00	2,617.00	1,702.00	Easter offerings increased to reflect past contributions
Offerings - Thanksgiving	2,000.00	785.00	2,042.00	1,827.00	1,402.00	Thanksgiving offerings, same as above
Offerings - Christmas	11,000.00	10,123.00	7,267.00	10,880.00	8,802.00	Christmas offerings, same as above
Offerings - Non-receipted	2,200.00	3,378.00	2,847.00	3,303.00	3,061.00	
Offerings - Building / Rectory	250.00	250.00	250.00	230.00	1,415.00	
Offerings - Memorial	650.00	650.00	8,787.00	26,100.97	-	
Offering - Memorial Flowers	1,800.00	1,780.00	375.00	310.00	-	
Offerings - Non-Parishioner	500.00	500.00	658.00	2,700.00	-	
Offerings - PWRDF	1,800.00	1,754.00	1,820.00	2,173.00	1,784.00	
Offerings - Memorial Candles	230.00	230.00	205.00	25.00	-	
<b>TOTAL OFFERINGS</b>	<b>125,730.00</b>	<b>119,089.11</b>	<b>138,157.62</b>	<b>161,474.53</b>	<b>135,690.21</b>	
Weddings - Income from	-	0.00	500.00	400.00	-	we need more weddings??
Storage from outside clubs	500.00	360.00	0.00	-	-	storage shed possibly to be placed on property for BWAC
Hall Rentals - Income from	10,500.00	9,647.50	5,845.00	6,935.00	10,595.00	plans to rent out hall on a regular basis
Funerals - Income from	2,500.00	1,794.00	200.00	-	100.00	an unfortunate part of life
Office Rentals - Income from	4,800.00	4,800.00	4,800.00	4,800.00	4,800.00	consistent
Meridian Accounts - Interest Earned	-	0.00	422.58	419.22	181.12	see below
Special Funds - Payment from	-	40.00	0.00	612.58	-	
Way-Off-Broadway (Pub Night)	2,700.00	2,337.00	1,855.00	2,231.00	-	all fundraising programs have agreed to meet expectations
Womens Group Fund Raising Income	4,900.00	4,250.00	760.00	-	-	15% increase
Parish Fund Raising Income	2,000.00	1,607.30	2,060.10	5,282.35	2,409.37	
Comfort & Joy Bazaar Income	12,000.00	11,508.55	9,252.25	13,976.62	10,853.64	
Taste of Town Income - Bldg Fund	-	0.00	5,565.00	3,759.55	-	
Peach Festival Fund Raising Income	2,800.00	2,219.75	2,800.00	-	-	
Henley Parking Income	800.00	773.18	616.00	-	-	not just Henley parking - perhaps Jazz festival?
Print Sales - Port Dalhousie	-	100.00	925.00	-	-	need to sell these prints
PWRDF - Good Friday Walk	1,800.00	1,310.65	1,639.00	1,440.00	1,040.00	increased due to expectations to contribute to PWRDF
Unrestricted Funds	15,000.00	29,877.32	10,000.00	10,000.00	-	these funds are dependant upon the stock market and 10yr average
Miscellaneous Income	2,500.00	2,417.81	125.00	-	-	
Coffee Hour - Receipts from	1,800.00	1,725.74	1,191.00	461.00	-	coffee, coffee, coffee
Special Funds - Church Donations	-	1,699.99	0.00	-	-	
#3 Women Group - Church Donation	-	0.00	6,500.00	2,302.00	-	
<b>TOTAL OTHER RECEIPTS</b>	<b>64,600.00</b>	<b>76,468.79</b>	<b>55,055.93</b>	<b>52,619.32</b>	<b>29,979.13</b>	
#1 Memorial Acc't - Interest Earned	250.00	246.34	188.04	93.61	-	these receipts are the interest earned from the Credit
#2 Nurse-SS-Youth - Interest Earned	5.00	4.68	3.68	2.98	-	
#3 Womens Acc't - Interest Earned	30.00	30.89	36.98	18.12	-	
#4 Building Acc't - Interest Earned	285.00	287.56	128.83	88.53	-	
#5 Refuge Acc't - Interest Earned	-	0.00	51.04	207.99	-	
#6 Altar Guild Acc't - Int Earned	25.00	21.00	14.01	5.55	-	
<b>TOTAL CHURCH GROUP RECEIPTS</b>	<b>595.00</b>	<b>590.47</b>	<b>422.58</b>	<b>416.78</b>	<b>-</b>	
<b>TOTAL RECEIPTS</b>	<b>190,925.00</b>	<b>196,148.37</b>	<b>193,636.13</b>	<b>214,510.63</b>	<b>165,669.34</b>	

Plus Total Receipts	190,925.00	196,148.37	193,636.13	214,510.63	165,669.34
Minus Total Disbursements	202,636.14	166,725.30	210,250.18	216,246.00	182,554.68
Operating surplus/deficit for year	- 11,711.14	29,423.07	- 16,614.05	- 1,735.37	- 16,885.34
Cash in bank as at January 1st	11,447.00	-4278.86			
Total	- 264.14	25,144.21			

# 2019 Property Insurance Schedule

**Insurer: The Ecclesiastical Insurance Office plc; Policy 1086**

**St. John's Church, St. Catharines**  
**The Rector, Rector's Warden, People's Warden and Treasurer**  
**80 Main Street**  
**St. Catharines, ON L2N 4V2**

<b>BUILDINGS/ LOCATIONS INSURED</b>	<b>APPRAISAL VALUE Oct-10</b>	<b>INSURANCE VALUE as at Feb 1/2019</b>	<b>RATES/\$100 REG - \$0.285 EWS - \$0.243</b>	<b>ANNUAL PREMIUM AMOUNT</b>
CHURCH & NARTHEX INSURANCE 80 Main Street	1,517,000	1,609,385	0.243	\$3,910.81
PARISH HALL & DINING AREA same as above	687,000	728,838	0.243	\$1,771.08
OFFICES & SUNDAY SCHOOL same as above	610,000	647,149	0.243	\$1,572.57
CONTENTS	Sep-08 245,002	259,923	0.243	\$631.61
NON-PROPERTY COVERAGE		3,245,295	0.085	\$2,758.50
Total				<u>\$10,644.57</u>

APPRAISAL VALUES DO NOT INCLUDE CONTENTS

There is a 1.9% increase in all rates due to the market increase of 5-7%

For additional information of your insurance coverage please refer to:

Anglican Diocese of Niagara - Insurance and Risk Management Handbook

**The invoice is expected to be paid in four (4) installments at February 28, March 28, April 28 and May 28, 2019**

**EXPLANATION OF RATES:**

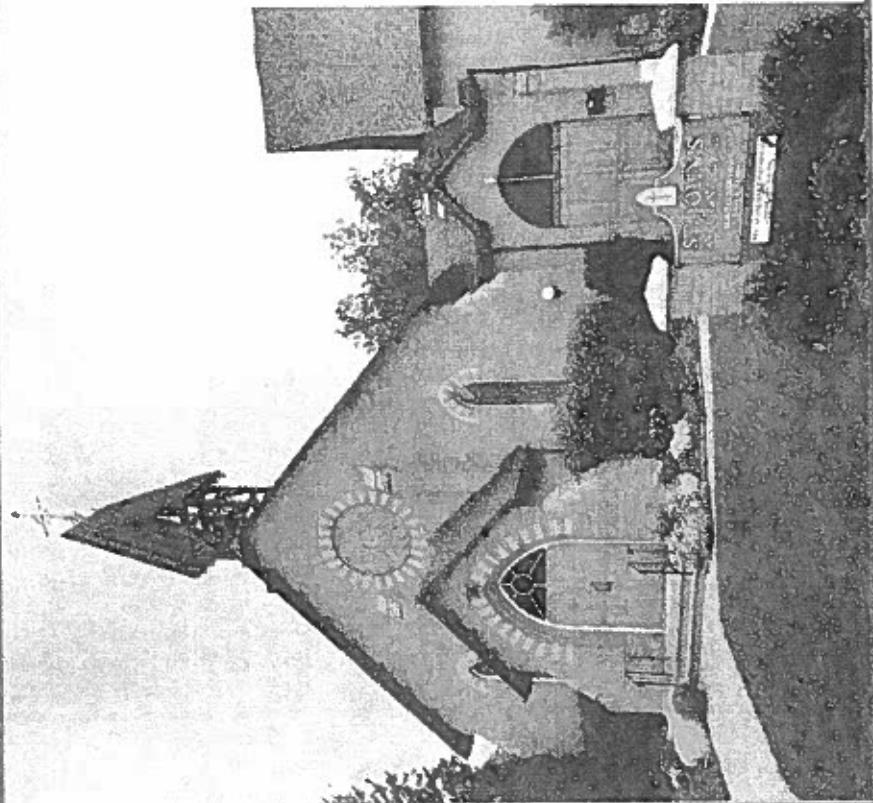
REG = Buildings WITHOUT Monitored Early Warning Systems: \$0.285 per \$100 Insurance Value

EWS = Buildings WITH Monitored Early Warning Systems: \$0.243 per \$100 Insurance Value

NPC = Non-Property Coverage \$0.085 per \$100 Insurance Value

**Please note, this is not an invoice but a SCHEDULE. The invoice will follow by mail.**

**For any further information please call Mrs. Kim Waltmann at the Synod Office:  
 905-527-1316 extension 540; Fax: 905-527-0963; Email: kim.waltmann@niagaraanglican.ca.**



## An Open Invitation to Join Us at

### *The Historic Church with Heart!*

Here at St. John's We Welcome Everyone, Regardless of Faith.  
*Become a Part of our Friendly and Inclusive Community.*

#### Sing, Worship and Socialize

*Sunday Services at 8:00 a.m. and 10:00 a.m.*

A Wonderful Place to Spiritually Nurture Yourself and Your Family.

*Help us to Help Your Community and Those in Need.*

- Home of The Port Dalhousie Group AA Monday night meetings,
  - Branch #350 Port Dalhousie Royal Canadian Legion dinners, dances and karaoke evenings.
  - The Scottish Club Wednesday evening meetings + special events.
  - Fitness classes offered both in the daytime and evenings.
  - We are a Barrier-Free Facility
- \* Hall Rentals Available for Small and Larger One-Time Events, and Long Term

#### *For More Information*

Contact us at 905.935.6021 or email: [stjohnschurch@cogeco.net](mailto:stjohnschurch@cogeco.net)

Church Office hours Tuesdays and Thursdays 9 a.m.-1 p.m.

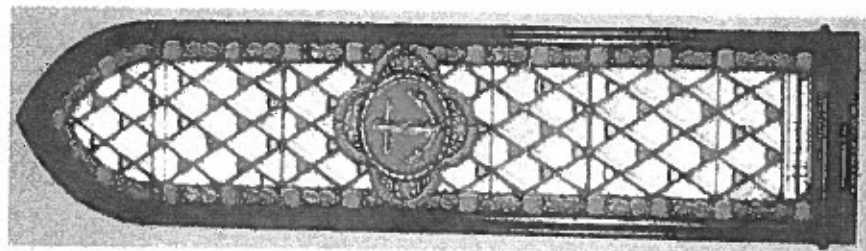
[www.niagarangliocan.ca/parish/st-johns-st-catharines](http://www.niagarangliocan.ca/parish/st-johns-st-catharines)

Historic St. John's Church, 80 Main St., Port Dalhousie, ON L2N 4V2



# St John's Anglican Church

## This Landmark Building is a Historical Treasure in Port Dalhousie



St. John's Church is among Port's most notable architectural and historical treasures, a landmark building at the corner of Ann and Main Streets since 1868. It is the village's oldest surviving church building whose rich history is intricately woven into the story of our lakeside village.

The founding of the parish dates to 1834, only a few years after the opening of the First Welland Canal and the establishment of the village of Port Dalhousie. The first church was called St. James, a wooden structure built in 1841 where St. John's Cemetery is today. With the opening of the Second Welland Canal in the 1840s and the resulting growth of the community, a new church was planned to be built in the heart of the village.

The new church named St. John's was designed by Henry Langley, a foremost Canadian church architect, and, to the joy of the parishioners, completed in 1868. It was a remarkable accomplishment and a grand building for a village with a population of about 1500. This lovely church is built of red brick with ornamental white brick detailing around the windows and doors. A large and beautiful rose window tops the entrance from Main Street. In the church steeple hangs the bell of the original 1841 church. The parish hall was added in 1912.

Stepping into this lovely church, one finds it retains its historical appearance and ambience of reverence and peace, a sanctuary respectful of the past and ever mindful of those parishioners who have gone before. Many of the church furnishings are memorials, works of craftsmanship and art that offer glimpses into the past of the parish and the village. These memorials are found in the windows, altar, chancel, screen, reredos, pulpit, organ, chimes,

and other furnishings. All have greatly enriched the church's beauty and reinforced the connection to its history. They recall the names of past parishioners who were active in the life of the parish and the village, and many whose descendants still attend the church today.

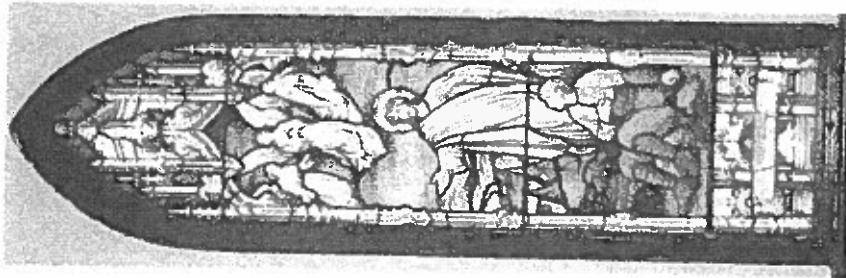
Of particular note among these many lovely features are: a beautiful stained glass window that displays a large anchor (a fitting symbol for this maritime community); another unique window that depicts a soldier lost in the First World War; a marble memorial to a lake captain lost in a famous shipwreck; and a small alabaster font used in the 1830s by the first missionary to this parish, who carried it in his saddlebag when he conducted house baptisms.

Also of note, longtime parishioner Brian Leyden has written two books well worth reading for wonderful insights into key aspects of St. John's history:

*The Windows of St. John's (published 2005) and Building a Village Church: St. John's, Port Dalhousie 1868 (published 2007).*

Rich in history, St. John's Church and the parish it serves have played a central part in the daily life of the village and its residents for over a century and a half. Today it continues that role, maintaining its connection to the past while actively enriching the life of our village and its residents. Port Dalhousie is fortunate to have St. John's Church, an historical treasure that offers our community much to appreciate, value, and preserve.

Nancy Cameron



## Survey for St. John's

March 17, 2019

In this interim period, it is appropriate that we take stock of the character of our parish. Answering the following questions will assist your Parochial Committee as they begin to compose a new Parish Profile.

1. How long have you been a member of St. John's? \_\_\_\_ years

Do you attend regularly? Yes No \_\_\_\_ Sundays per month

2. How did you become involved with St. John's?

\_\_\_\_\_  
\_\_\_\_\_

4. What words would you use to describe your parish church to other people?

\_\_\_\_\_  
\_\_\_\_\_

5. Please name what you believe are two assets of your parish:

\_\_\_\_\_  
\_\_\_\_\_

6. What two features of St. John's do you think need to be updated?

\_\_\_\_\_  
\_\_\_\_\_

7. **Worship** - is the worship at St. John's meaningful to you?

\_\_\_\_\_  
\_\_\_\_\_  
\_\_\_\_\_

8. **Committees and Groups** List your involvement with any study or discussion groups, parish committees, choir, parish council or other activities in which you are involved. Please comment on your experiences.

---

---

---

9. **Social Involvement** - Are you involved socially in the parish? Please comment on your experiences and how might these be improved.

---

---

---

10. Please share one service or event that you think should be repeated.

---

---

#### **Prayer**

Lord God,

In this Lenten season, there is much for us to do. Amid this transitional period in the life of this parish, may we more fervently seek the presence and guidance of your Holy Spirit as we take this time to consider the life and ministry of St. John's Church. We pray that by the abundance of your grace and the blessings you have bestowed upon this community, that we will continue to be encouraged to make a difference locally and beyond.

May we always be deeply aware of your divine will in all that we undertake.

We pray this in the name of your Son, Jesus Christ. **Amen**

# The Standard

## ✕ NOTICE TO READERS:

Register now to support your local journalism!

(/community-static/8891523-register/)

## Port Dalhousie condo project approved

### Waterfront development at 57 Lakeport Rd., site of legion hall

News Jun 12, 2018 by Allan Benner (/stcatharines-on-author/allan-benner/CB3129C8-AFDC-4AA6-93DC-3004460B6522/) (mailto:allan.benner@niagaradailies.com) The St. Catharines Standard



*A concept image of the eight-storey condominium building planned for 57 Lakeport Rd. in Port Dalhousie, approved by St. Catharines city council Monday. - Special to The St. Catharines Standard*

An eight-storey building was given the green light for Port Dalhousie, providing a new home for Royal Canadian Legion as well as the residents of 51 proposed condo units.

Monday, St. Catharines city council approved the waterfront development at 57 Lakeport Rd., proposed by developer Tom Rankin and Royal Canadian Legion Branch 350, to permit the mixed-use building that would also include a 560-square-metre legion hall, outdoor patio areas and 94 underground parking spaces.

# The Standard

## ✕ NOTICE TO READERS:

Register now to support your local journalism!

(/community-static/8891523-register/)

## Lincoln Fabrics development aims for spring 2021 occupancy

News Aug 28, 2018 by **Karena Walter** (/stcatharines-on-author/karena-walter/A51414DF-8A62-4D5C-983C-150BA3470C1C/) ✉ (mailto:karena.walter@niagaradailies.com) The St. Catharines Standard



*A rendering of plans for the former Lincoln Fabrics building, looking west from the east side of the harbour. Illustration from Port Dalhousie Harbour Club Ltd. - Special to The St. Catharines Standard*

Developer Sheldon Rosen is vowing the transformation of the former Lincoln Fabrics building in Port Dalhousie will result in an elegant structure that will re-energize the area when it's done in spring 2021.

"It's now more or less a wreck because windows have been boarded up and it looks like it's been abandoned for years," he said, the morning after city council approved zoning amendments for the mixed-use project.

"When it's completed it will have a huge amount of charm. Not only because of the bricks and sticks, but because of the way the landscaping is done. Because of the way people who have never been able to step on the property get invited into it and will be able to participate in its ground floor amenities in terms of restaurants and cafes.

# The Standard

## ✕ NOTICE TO READERS:

Register now to support your local journalism!

(/community-static/8891523-register/)

## Rankin to the rescue: Purchases Union Waterfront property in Port Dalhousie

### Local builder speaks about buying Port Dalhousie property

News Feb 18, 2019 by **Karena Walter** (/stcatharines-on-author/karena-walter/A51414DF-8A62-4D5C-983C-150BA3470C1C/) (mailto:karena.walter@niagaradailies.com) The St. Catharines Standard



*A view of the former Union Waterfront property from Lock Street in Port Dalhousie. - Grant LaFleche, The St. Catharines Standard*

Tom Rankin says he likes to take on a challenge.

It's why purchasing the controversial Port Dalhousie commercial core property — a site with 15 years of defunct condo tower plans, planning battles and community angst — doesn't faze him.