




PARISH PROFILE

St. George's Anglican Church Guelph ON

2
0
2
2





We wish to acknowledge that St. George's Church sits on land that, at the time of contact, was held by the Attawandaron as an area of trade and ceremony by the two rivers. At various times, the land was occupied by both Haudenosaunee from the south and Anishnaabe from the north. In more recent times, the Huron Treaty gave rights to the Mississaugas of the Credit First Nation. May we who dwell on or visit this land also be good stewards and honour those who came before us.

WELCOME TO ST. GEORGE'S!

TABLE OF CONTENTS

A Message from the Parochial Committee	3
A Letter from the Bishop of Niagara	4
A Message to the Rector We Seek	5

Section I: Our Parish 6



Our Mission
Historical Presence
Buildings & Grounds
Governance
Leadership: Clergy & Staff

Section II: Our Ministries 10



Worship & Liturgy
Lay Ministries

Section III: Our People 18



Our Congregation
The Diocese, the City & Community

Section IV: Our Stewardship & Finances 20



Stewardship
Financial Resources

Section V: Our Future 23



Our Strengths & Challenges
Our Journey Together



A MESSAGE FROM THE PAROCHIAL COMMITTEE



St. George's Anglican Church, located on the banks of the Speed River in downtown Guelph, is a robust spiritual community striving to remain vibrant. The beauty of the 149-year-old limestone masterpiece of early Canadian neo-gothic architecture is matched by the uplifting music - full choir, renowned organ, and carillon - and enthusiastic core of parishioners.

These parishioners want to fulfil St. George's mission to "Make Jesus Christ Known" through regular worship and a variety of ministries for young and old, regardless of their position on their faith journey.

During the past two years, St. George's has embraced new technology and new ways of doing things, as COVID-19 forced the re-thinking of virtually every facet of our parish life. St. George's desires a new Rector who can continue to find creative solutions to upcoming challenges while still embracing the core Anglican traditions that make this Church so unique.

We trust that this Parish Profile delivers a comprehensive snapshot of who St. George's is and provides insights into where God draws the community to go in the future.

Blessings,

Giesela Goetz (Chair)

Laura McDonald

Rani Varkey

Bruce Carrick

John Laidlaw

Jeanne Forsythe

Nancy Hewat

Laura Keller

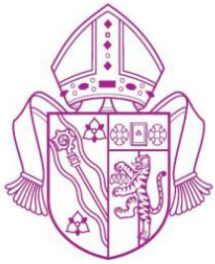
Paige Keller

Michael Nightingale

Ashley Sukhdeo

Archbishop Colin Johnson (Advisor)





OFFICE OF THE BISHOP OF NIAGARA

Anglican Church of Canada

Dear applicant,

Welcome! If you are reading this introduction and are sensing the possibility of a call from God to serve alongside the people of St. George's, Guelph, you are very welcome.

St. George's is a parish that holds a special place within the diocese of Niagara; anchoring God's mission of love in Greater Wellington.

With their eyes firmly fixed on the present and future, St. George's is seeking a rector who will embrace, lead it through, and enact both the parish's Mission Action Plan and situate it within our wider diocesan vision - as we seek to discern where God calls us to life and compels us to love in the local and wider community, ignited by the irresistible love of Jesus and renewed by the Holy Spirit.

The parish family of St. George's is warm, energetic, and passionate about the ministry to which they've been called: "to make Jesus known." For nearly two hundred years they have sought to do just this and to be the face and hands of Christ in the beautiful City of Guelph.

And so, as you are drawn deeper into this document - a snapshot of their ministry in this community, I pray that you may feel the urging of the Holy Spirit to come and journey with this wonderful and significant parish.

God's richest blessing in your discernment.

The Right Reverend Susan J.A. Bell
Bishop of Niagara

A MESSAGE TO THE RECTOR WE SEEK

At St. George's, the characteristics and qualities of a Rector that we feel are most needed are:

An ability to motivate and challenge parishioners on their spiritual journey, with:

- the skill to create engaging liturgy, deliver meaningful and thought-provoking homilies and other explorations of spirituality;
- an appreciation for and desire to support our vibrant music program to enliven our worship; and
- an awareness of the need to be respectful of different viewpoints on spirituality.

An open, inclusive and positive attitude with energy and fresh ideas, and who:

- enjoys getting to know people and shows an interest in parishioners' lives (a people person);
- connects with all parishioners particularly children, youth and young adults by fostering an inclusive community;
- has a spirit of compassion, generosity and humility, the gift of sensitivity and the ability to perceive nuance;
- is a good listener and effective communicator, open to omni-channel engagement and supportive of consistent use of social media platforms to broaden our reach; and
- has a willingness to work with and collaborate with secular and faith community partners.

A collaborative, approachable leadership style (a team builder) with:

- an ability to discern the gifts of parishioners and motivate them to set and accomplish ambitious yet realistic goals to achieve our mission to "Make Jesus Christ Known" (a community builder);
- an understanding that change and growth take time, consultation, and resilience (a change maker); and
- a willingness to work with St. George's governance model, along with realistic financial expectations.

In summary, we seek *an individual who loves God and loves people* and uses God's gifts to draw the best out of those around her/him.





Section I: Our Parish

Our Mission

Our mission is to "Make Jesus Christ Known".

Our Goal is to make St. George's a place of:

- Prayer and seeking after God
- Faith, where Christ and the gospel are proclaimed
- Outreach to those in need
- Engagement in the issues that confront us today
- Love, where all find a warm welcome

Historical Presence

Our current location is the site of the third St. George's Church. The original St. George's Church was a wooden structure located in St. George's Square, on land set aside for a church by Sir John Galt. The original wood structure was completed in 1834 and renovated to stone and expanded in the 1850's. This stone church at St. George's Square served as the church for the next 20 years. The church at the present site was designed by renowned architect Henry Langley and completed in 1873. This magnificent example of Canadian gothic architecture was originally intended to be a cathedral.

As a landmark in Guelph, St. George's Church is recognized and appreciated by those who live and work downtown. Not only do locals hear the quarterly Westminster chimes from our bell tower, but also carols and hymns from the carillon, which can be heard up to a kilometre away.

Building and Grounds

St. George's Church, with its magnificent architecture, is located on approximately 0.4 hectares. The grounds include a garden, play space for the Workside Early Childhood Education Centre and a parking lot for 25 vehicles. Four linked buildings are on the site:

- the church (opened in 1873)
- the former rectory (1879)
- the narthex, memorial chapel, meeting rooms (1958)
- Mitchell Hall (1958)

The total floor space is approximately 3,100 square meters (33,000 sq. ft.) which, in a recent energy audit, was broken down as follows: Church 40%, former rectory 30% and 1958 additions 30%.



"This is a great opportunity to re-imagine what St. George's can be in the community."

Parish survey respondent, May 22





The Church includes the sanctuary, memorial chapel, narthex, recently renovated accessible washrooms, and a basement. In the former rectory are the church offices, library and two floors rented to Workside. The 1958 addition includes the underutilized Mitchell Hall, which comprises a large auditorium with a stage, a commercial-grade kitchen, as well as meeting rooms and space for Workside. The pattern of the use of space varies. It is estimated that 35% of the space is used at least five days a week, 25% of the space one day a week for worship, and 40% of the space occasionally, mainly Mitchell Hall.

The heating and lighting systems have been recently upgraded and led to significant cost savings. Some minor improvements have been made to accessibility, although some challenges remain.

Although building maintenance is a significant portion of the parish's capital budget, the building is well maintained. Generous endowments from parishioners have helped offset this expense.

Furthermore, initiatives have been undertaken to increase the number of users of vacant space. However, to remain competitive, further renovation of space and furnishings is required. Recently, it has been suggested that one way to establish a sustainable financial presence is to redevelop parts of the site to provide ongoing revenue to cover running costs and maintenance of the building. This idea of ensuring long term sustainability needs to be explored in the near future, whilst the Church enjoys a strong financial foundation.

Plans are in hand to:

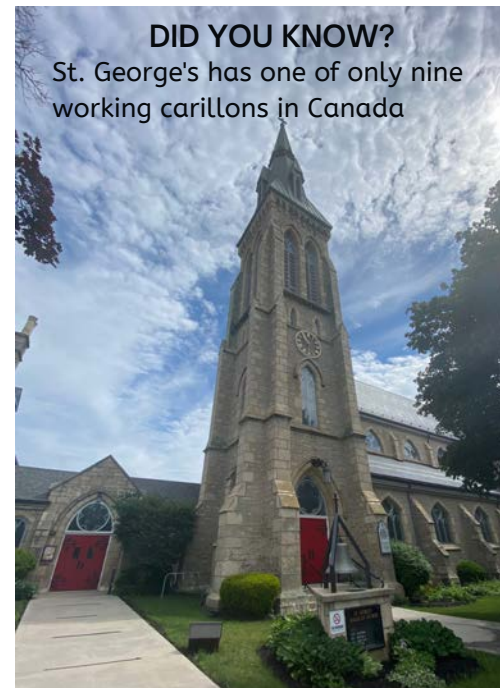
- install a permanent dais between the nave and the chancel;
- enhance the gardens to incorporate a memorial space; and
- upgrade the parking lot.

Funds for these projects have already been allocated.



"Parish membership will grow as people live out the Christian gospel of love and caring."

Parish survey respondent

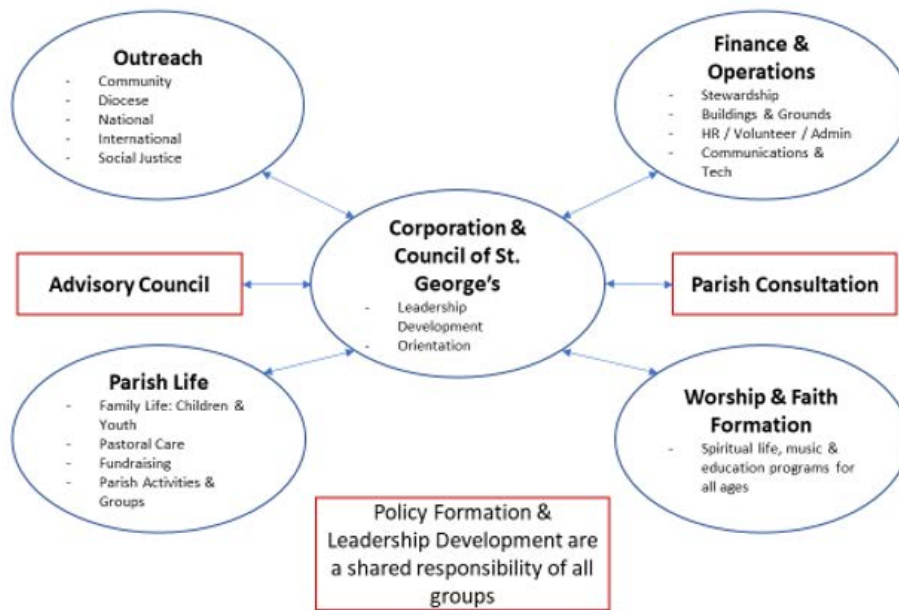




Governance

We have an effective Governance model with clear roles and responsibilities. This structure provides a means of effective day-to-day administration that allows the Parish to utilize the best gifts of the Rector in the most appropriate way. The structure facilitates clear and transparent communication to and from the Parish to the Council and Rector while maintaining the authority of decision-making within the appropriate bodies.

The Parish Council and Corporation comprise the Council of St. George's. The purpose of this model is to establish effective working teams, clarify roles and responsibilities, identify, train, engage and support lay leaders. The model, as shown on the next page, has effectively functioned for nearly a decade.



The Council of St. George's includes the Rector, the Priest Assistant, Wardens, the Treasurer, the Synod delegates, the Youth Delegate to Synod, and Liaisons who represent a broad cross-section of the church.

The Corporation (made up of the Wardens, the Rector, and the Treasurer) meet on a regular basis to respond to recommendations from the Council and are responsible for all matters pertaining to the basic functionality of the Parish.

During COVID-19, the Council of St. George's met regularly via Zoom and we plan to transition to in-person meetings when appropriate.





The Council of St. George's includes the Rector, the Priest Assistant, Wardens, the Treasurer, the Synod delegates, the Youth Delegate to Synod, and Liaisons who represent a broad cross-section of the church.

The Corporation (made up of the Wardens, the Rector, and the Treasurer) meet on a regular basis to respond to recommendations from the Council and are responsible for all matters pertaining to the basic functionality of the Parish.

During COVID-19, the Council of St. George's met regularly via Zoom and we plan to transition to in-person meetings when appropriate.

"I think it is incredibly important that the church take a proactive approach to building relationships with younger families to grow the parish long-term."

Parish survey respondent

Leadership & Staff

The following comprises our staff at St. George's Church. All staff are part-time or contract with the exception of the Rector and one Sexton.

The Clergy

- Rector - vacant at this time, Interim Pastor
- The Reverend Canon Christopher Pratt
- Priest Assistant - The Reverend Canon Jean Mitchell (volunteer)
- Honorary Assistants (volunteer)

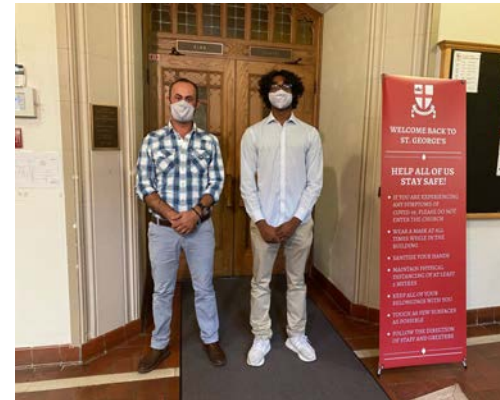
The Staff

Staff Team

- Bruce Mackenzie - Parish Administrator
- Tracy Jewell - Bookkeeper
- Ellen Luccock - Business Manager
- Toni Atieh, Bryce Sukhdeo - Sextons
- Harry Oussoren - Facility Manager

Music Staff

- Dr. Gerry Manning - Organist & Director of Music (retiring July '22)
- Matthias Schmidt - Assistant Music Director
- Donald Hamilton - Carillonneur (volunteer)





Section II: Our Ministries

Worship & Liturgy

Services

Worship services at St. George’s connect with parishioners through a variety of liturgies and music. Currently, services are offered on Sunday and mid week.

Time	Format	In-Person	Live-Streamed
Sunday 8:30 am	Traditional said service using the Book of Common Prayer with a Homily.	Yes	Yes
Sunday 10:30 am	Choral Eucharist using the Book of Alternative Services.	Yes	Yes
Mid-week 10 am	A said service using the Book of Alternative Services.	Yes	No

As we continue to move through the readjustment from COVID-19 restrictions, additional worship opportunities, such as Bible study, will be restarted. Attendance is unpredictable, but our goal is to continue to bring people back into the church and grow in numbers.





Music

St. George's has a long musical history, and today we are blessed with a strong music program that includes a renowned choir and a choral scholars program. St. George's is fortunate to have scholarship funds that support these young singers.

St. George's is also known for its organ, an integral part of the music program. Our Casavant four-manual organ - recently renovated and with a digital upgrade - is one of the most noteworthy instruments in southwestern Ontario.

To further enrich music at St. George's, our carillon has attracted considerable attention since its renovation and expansion in 2006. The tower is home to 36 carillon bells. The carillon is one of only nine working carillons in Canada and is one of the most recently renovated carillons in North America. Guest carillonneurs from as far away as California have come to play.

Please note that we will be searching for a new Organist / Director of Music in the Fall through a discernment and visioning process.

Children & Youth

St. George's worship is intended for all ages. With extra activities, we keep our young people connected, reminding them that they are an integral part of our congregation. We strive to pass on God's love to them through acts of kindness.

Sunday School

Pre-COVID-19, St. George's had an active Sunday School held during the 10:30 service. We have a dedicated Sunday School room as well as the use of the Mitchell Hall gymnasium as required. Recently, we have resumed an in-service children's message and intend to resume Sunday School in Fall 2022.

Kids' Packs

Thirty-plus children receive monthly Kids' Packs which are coordinated, assembled and delivered by members of the Working Group. These packs are built around the lectionary, so the children's learning is supported by the weekly service whether they attend in person or online. They receive craft supplies, puzzles, colouring sheets and the occasional treat to enjoy throughout the month.



The children ran to the door, jumping up & down yelling "The Church is Here!" As I drove away, they were waving & yelling "Thank You!"

Kids Pack Delivery Team Member





Family Corner Refurbishment

Recently the Working Group submitted a proposal to the Anglican Foundation of Canada Say Yes! to Kids for the refurbishment of the family area at the back of the church. The grant will cover the cost of creating a comfortable space for parents with their children and nursing mothers to use during the service. Children and young families are welcomed into our midst, and this cozy family corner is an invitation to inclusivity.

Family Events

As restrictions allowed, we have hosted Family Worship events that allowed parents and children of all ages to participate in a fun, activity-filled couple of hours. We held a "Day of the Dead" event which focused on All Saints. We have also held family Advent wreath-making events that allowed families to build their own live wreath, while learning about the significance of Advent.

College Care Packs

We have tried to maintain a connection with our young adult members who go off to college or university once they have graduated from high school. Our Children & Youth Working Group members have sent care packages to them around exam season each semester, to let them know that they are still valued members of the parish.

Other Youth Activities

We have also hosted a number of online events over the past year including a painting class and a virtual escape room.

This year we have started in-person activities including Sports 'n Sneakers night (gymnasium sports and board games), as well as a youth watercolour painting course.

Confirmations

Perhaps most importantly, three youth were confirmed this year at the Cathedral in Hamilton, following a series of in-person and online confirmation classes over several months.



"I hope that the parish continues to maintain its tradition while always being welcoming to new faces."

Parish survey respondent





Live Streaming Ministry

Live Streaming is new to St. George's since the pandemic began and is embraced as an important ministry. It was decided in early 2021 that we would continue to offer live streaming of the services going forward regardless of in-person services being available. This allows people who are uncomfortable going to church because of COVID-19 or those who cannot make it to the service due to mobility issues, holidays or the weather to still be able to partake in the services. Live streaming also allows former St. George's parishioners who have moved away to now be able to enjoy St. George's again. A four-camera system was installed with an ATEM switching board to ensure the services are effectively viewed on YouTube. There are over 200 weekly viewers between the 8:30 and 10:30 services.



Lay Ministries

Parish Life

Parish Life extends beyond the worship services through various groups and activities. Pre-pandemic activities included groups such as:

- Chi Rho Fellowship - this group began in 1948 to encourage adults to grow in service and responsibility to the church, in their relationship to Jesus Christ, and in relationship to each other to meet their spiritual, intellectual and social needs.
- Women's Fellowship - this group organized social gatherings for the women of the parish. Activities included guest speakers, theatre outings and outreach projects.
- Book Club - this club meets monthly to discuss that month's book choice.
- Prayer Shawl Group - this group met once a month to knit together and pray for those going through life transitions like illness, grief, or celebrations like baptism. The knitted items were blessed in the church and then delivered to the recipients, linking them in a practical way to the church.
- Sleighbell Fantasy Christmas bazaar - an annual Guelph tradition with a tea room that is the talk of the town!

"I would love to see a stronger focus on mission work both locally and internationally."

Parish survey respondent





- Coffee Groups - parishioners are invited to join together after worship to enjoy some coffee and conversation. A small group of volunteers provide this popular ministry.
- Soup & Buns lunches - these lunches were held in the spring and fall to allow parishioners to enjoy lunch together while raising money for our Saturday Night Suppers. A couple dozen volunteers donated a crock-pot of soup, and freewill offerings were accepted.

It has been two years of extraordinary circumstances having all in-person events cancelled due to COVID-19. Yet members of these groups have stayed in touch through phone calls, emails and Zoom calls.

Through a New Horizons for Seniors grant, we've also provided iPads to seniors to enable them to easily watch our online services and stay connected to one another. How these groups move forward is another challenge facing St. George's.

Outreach & Social Justice

Connections in the greater Guelph community have been limited due to COVID-19, however, Saturday Night Suppers continued in a COVID-safe manner. Usually four times per year, St. George's Church provides the food and volunteers to host a Saturday Night Supper, a weekly meal held at the Royal City Mission.

The goal of these meals is to provide a free, nutritious meal in a safe and loving environment to anyone in the community who is in need. St. George's has temporarily discontinued helping with the suppers due to COVID-related issues and this will be reviewed over the next year.



Nearly 50% of respondents considered themselves to be a "Cradle Anglican", while a further 38% self-identified as a "life-long Christian".

Parish survey, May '22





St. George's Church continues to support the Primate World Relief Development Fund (PWRDF) through individual giving and various campaigns. Each year, we take on an Advent fundraising project in support of PWRDF. In 2021 the Advent project was to provide infant starter kits to new moms in Lesotho. Together, we raised almost \$4,000! Each \$25 gift gave a starter kit (blankets, baby vests, jumpers, hats and a set of cloth diapers) to new moms. This year, we are raising money for the PWRDF Ukrainian relief appeal.



Parishioners from St. George's have also supported the Ecumenical Campus Ministry at the University of Guelph. Pre-COVID, we supported their regular community suppers by providing meals and fellowship a few times each year. This was a wonderful opportunity to connect with faithful young adults who were often far from family. We fully expect to resume this activity as restrictions continue to lift.

There are many opportunities within our Parish Life, Outreach & Social Justice programs to grow and change. The challenge will be to engage more parishioners and newcomers.

One of St. George's greatest success stories was sponsoring a family of Syrian refugees in 2016. We are proud to say that the family of five (including triplets) are now members of the parish and the father is our Sexton. Happily, most of the family became Canadian citizens in 2022.



Pastoral Care

Our ability to provide pastoral care has been significantly affected by COVID-19 and some restrictions remain. Prior to COVID-19, we conducted regular worship services at a variety of retirement homes and those have yet to return to normal.

Currently, pastoral care is provided at our local hospital, hospice and in nursing and retirement homes as needed and when permitted.

We invite the families of those in our parish who have died to our annual All Saints Service on All Saints Day each year.





Typically, we deliver flowers after church on Sunday to any parishioner experiencing a difficult time.

Our prayer shawl ministry has enjoyed wide support and has provided prayer shawls to people experiencing health problems. They have also given shawls to our young people leaving to go to university or college. Babies who are being baptized receive a baby blanket as well. At this time, our prayer shawl ministry requires new leadership in order to continue.

Members of our Prayer Chain continue to receive a weekly update with the first name of those in our parish requiring particular prayer, and suggestions for other issues where focussed prayer would be helpful.

At Christmas and Easter, we traditionally reach out to those who are shut-in, either in their own homes or in nursing homes. This used to involve a personal visit with either a small gift at Christmas or a posey of flowers at Easter. Due to COVID-19, these visits have not been possible for the past few years, but cards were sent out with a friendly message instead.



"We should make it easy for newcomers to walk through the doors and to make those who have been worshipping here for decades welcome and wanted."

Parish survey respondent





Section III: Our People

Our Congregation

Our parish comprises a broad spectrum ranging from families with young children to working families, young adults, couples, singles, and seniors.

There is a strong core group attending every week (for both services) as well as those who attend less frequently.

In total, there were nearly 600 households on the Parish List in 2021, which is a modest decline from 2018, as shown below. Of more concern is the decline in regular identifiable donors, which dropped significantly during COVID-19; we currently have just over 200 donors today.



Parish Roll	2021	2020	2019	2018
Total # of Households*	571	598	638	649
Total # of Individuals (Souls)*	1,294	1,340	1,438	1,454
Number of Identifiable Regular Donors	214	237	298	310
*Includes both active & peripheral members				

Services	2021	2020	2019	2018
Total Services	119*	121*	255	302
Holy Communion Services	96*	81*	235	260
Baptisms	5**	0**	10	10
Private Communions	31*	202*	1,208	1,392
Weddings	1**	0**	5	2
Confirmation & Reaffirmations of Baptismal Vows	0**	0**	-	7
Funerals	18	22	19	27

* Due to COVID restrictions, services in long-term care and retirement homes were permitted only from Jan 1 to Mar 13, 2020. In 2021, only 3 services were allowed. Thus, total number of services and private communions decreases substantially.

** Baptisms, Confirmations and Weddings could take place only when in-person services with restricted attendance were permitted.





Our online services continue to be viewed by:

- those who remain uncomfortable with attending church in-person
- former parishioners who live in different cities
- people who attended St. George's as children and now live in other parts of Canada
- those on holidays
- a small group that we have only ever reached online.



We have included this online participation in our attendance numbers as illustrated below:

Service	2021	2020	2019	2018
Sunday 8:30 am	156*	113*	40	44
Sunday 10:30 am	285*	295*	130	149
Mid-week 10 am	n/a **	17	19	20
Total	441*	425*	189	213

* Includes average number of those permitted to be in the church plus average number of those who viewed livestream services

** Service was suspended because of COVID restrictions. It has now resumed effective May 2022.

The Diocese, City & Community

St. George's is located within the Anglican Diocese of Niagara, with the bishop's cathedral located at Christ's Church Cathedral in Hamilton. Located within the ecclesiastical province of Ontario, it borders the Dioceses of Huron and Toronto.

The current bishop of Niagara is The Right Reverend Susan Bell, who succeeded The Right Reverend Michael Bird as diocesan bishop on June 1, 2018.

There are just over 90 parishes within the diocese served by approximately 120 licensed parish priests, with several honorary clergy, vocational deacons and licensed lay people. The diocese is divided into five regional deaneries including Greater Wellington. Each deanery is overseen by a regional archdeacon and regional dean.





Guelph is a city in Southwestern Ontario with a population of approximately 150,000. Known as "The Royal City", Guelph is roughly 28 km east of Kitchener and 100 km west of Toronto. It is the seat of Wellington County but is politically independent.

Guelph began as a settlement in the 1820s, established by Scotsman John Galt, who was in Upper Canada as the first Superintendent of the Canada Company. He based the headquarters, and his home, in the community. Galt would later be considered the founder of Guelph.

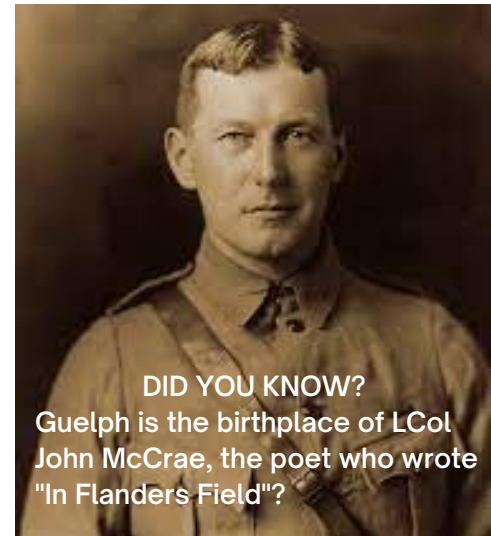
Guelph is home to a world-class university, a vibrant downtown core, a well-supported OHL hockey team (Guelph Storm) and is the national and provincial centre of the agriculture sector. Guelph also enjoys a strong economy, low unemployment and crime rates.

Guelph is renowned for its

- environmental focus
- arts and music
- social activism
- agricultural, small-town feel

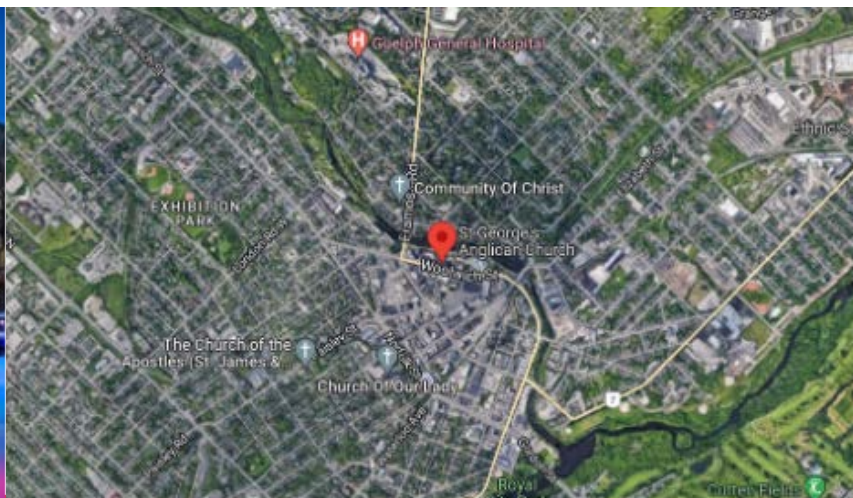
Guelph has experienced significant population growth over the past decade increasing by roughly 50% from the 100,000 level just over a decade ago.

St. George's is located at 99 Woolwich Street in downtown Guelph, steps from the Sleeman Centre (hockey arena), River Run Centre (performance arts), Cenotaph and St. George's Square (main city square).



DID YOU KNOW?
Guelph is the birthplace of LCol John McCrae, the poet who wrote "In Flanders Field"?

DID YOU KNOW?
The jock strap was invented by Guelph Elastic Hosiery in the 1920s





Section IV: Our Stewardship & Finances

Stewardship

St. George's has periodically undertaken successful stewardship campaigns for a variety of needs. Our last major stewardship campaign took place in 2019 (pre-COVID); the theme was "Ours to Enjoy - Ours to Share" Thanksgiving in Action. The Stewardship Committee prepared a stewardship package with a narrative budget and presented it to all members of the Parish in late 2019. There was a component of interaction throughout the five weeks of the campaign with some Sundays having more or less focus on the theme depending on other events happening at the church. As we re-emerge from COVID, we will re-engage with this process, although the timing is to be determined.

We continue to work on planned giving opportunities and have developed policies on legacy and planned giving.



DID YOU KNOW?
St. George's mission is "To Make Jesus Christ Known"

Financial Resources

St. George's Church is financially stable (see Appendix A). The financial resources of St. George's are reviewed during the year by the Council and Corporation. We have a good number of parishioners that subscribe to pre-authorized payment and now that the church has reopened, more weekly donations are being received.

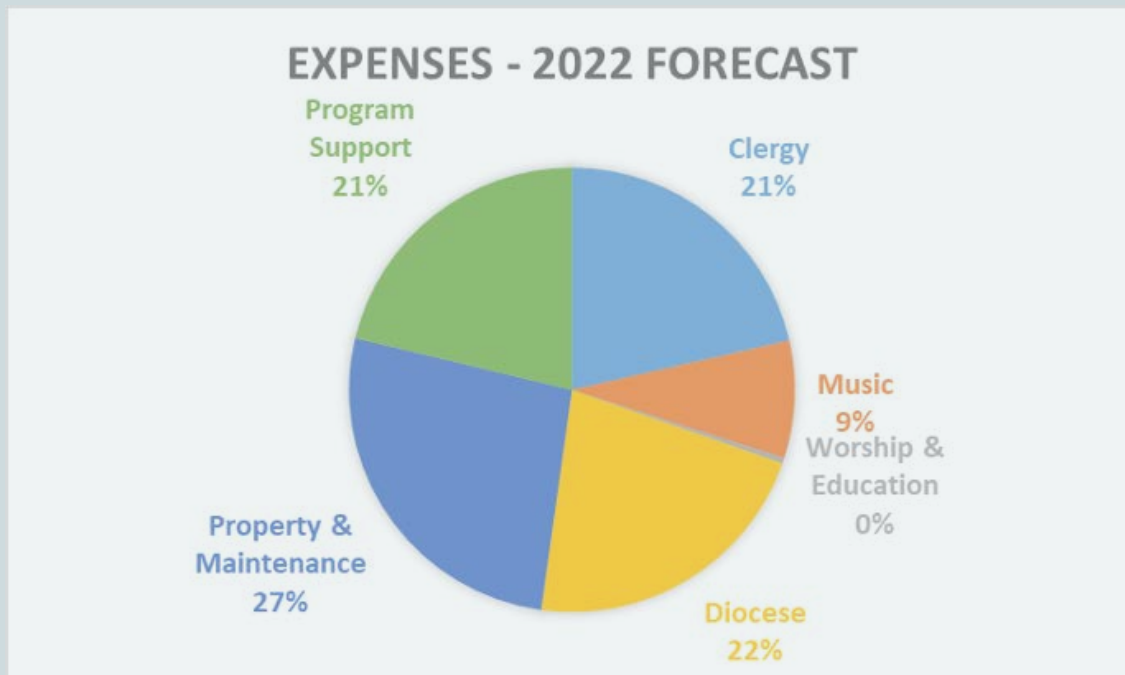




In total, our annual revenue has been in the \$400,000 range for the past few years. The vast majority of revenues are generated through collections (90%) as illustrated below.



In 2022, we budgeted approximately \$440,000 in expenses, for a net deficit of approximately \$33K. This deficit is covered via transfers from our investment reserves, which we intend to replenish.





St. George's is still dealing with the effects of COVID-19, but with more restrictions being removed, and parishioners feeling more comfortable returning to church, we hope to boost the church's financial position.

We are very fortunate to have a major tenant in the church, Workside Early Childhood Education Centre. The revenue from this tenant helps to offset our building expenses. We look forward to being able to generate revenue by having other community groups resume use of our facilities.

St. George's also has a recently upgraded commercial kitchen that can also generate revenue. St. George's is very fortunate to have a significant amount of reserve funds due to bequests and the performance of our investments, which currently stand at nearly \$3MM.

The Investment Committee oversees the long-term investment strategy of St. George's with the help of an outside financial advisor. These investments have helped St. George's weather COVID-19 and, thanks to continued bequests and market performance, our reserves have increased significantly over the years.



60% of respondents indicated that each of the following were 'Extremely important' to them:

- Provide compassionate spiritual guidance & pastoral care, supported by trained laity
- Has a warm friendly approach, is sincere and transparent, and maintains a sense of humour
- Encourage leadership to create an inclusive welcoming community

Parish survey, May '22





Section V: Our Future

Our Strengths & Challenges

St. George's has a wide variety of strengths and assets:

People & Liturgy

- We strive to be an open and inclusive community
- We respect the diversity of the Anglican family
- We offer a variety of ways for parishioners to be involved
- The capacity of our volunteers – there is a lot of giftedness within the parish community
- The size of our congregation
- Parishioners are well connected in the wider community
- We are willing to partner with others in the community
- Our music program including the Choral Scholars program

Physical

- Our building – its history and beauty
- The building is in good repair, with a large nave and two parish halls
- Our partnership with Workside Early Childhood Education Centre
- Our spaces, such as Mitchell Hall, which can double as a gymnasium
- A public-health approved commercial kitchen that is rentable
- One of nine working Carillons in Canada
- Four manual Casavant organ - arguably the best organ in Southwestern Ontario
- Our investment in video equipment for live streaming services
- Location in the city of Guelph - close to Toronto and international airports, with a world-renowned university, strong economy, low crime and unemployment rates
- Access to outreach and social justice opportunities, particularly being located in the downtown core
- Our financial position is very strong, with a sizable investment portfolio



"St. George's is a place that allows me to get closer to God"

A Parishioner





Our future is not without challenges. As with most Anglican churches, the parish has an older demographic in relation to the community but does have some engaged younger families.

Internal Challenges

- Parish engagement – our volunteer workforce has yet to fully return post-COVID. How do we get people back and involved and build a true community?
- Volunteer fatigue
- Grow parish membership to sustain an Anglican membership in Guelph
- The need for stronger Sunday children’s programming
- Expand variety of ways to worship
- Our congregation is aging
- Lack of trained laity to provide pastoral care
- How do we use digital channels to our advantage?
- Our church lacks conversation about spirituality (lack of Bible studies, workshops, faith formation activities)
- A need to revitalize our stewardship program - inspire regular and generous giving of time, talent and treasure



External Challenges

- The changing face of our community – speaking the language of cultural diversity while maintaining the language of faith in a society deeply suspicious of institutional religion
- Optimizing the use of facilities to ensure we can preserve and maintain the Church and associated buildings
- Parking – with our downtown location, we are often competing with other downtown entities (courthouse, River Run Centre, Guelph Storm hockey games) for street parking
- Accessibility – although we have made substantial improvements to our accessibility with the lift and the renovation of our washrooms, difficulties remain due to the age of the building
- Reconnect and strengthen our relationship with the University of Guelph, in particular the Ecumenical Campus Ministry
- To determine the direction of our outreach activities, in consultation with other agencies in Guelph





Our Journey Together

Come join us, to lead us in our vision of making Jesus Christ known.

St. George's represents a unique opportunity to lead and shepherd a large congregation in a traditional yet progressive environment. Our location at the heart of the city of Guelph places us within a broader, eclectic community that offers big-city amenities with a small-town feel.

Consider St. George's Church as the next step in your ministry. We trust that God will call you to visit us at St. George's.

